

Desjardins, Tara (2018) Mughal glass: Indian glass from the late modern and early colonial period. PhD thesis. SOAS University of London. <http://eprints.soas.ac.uk/30324>

Copyright © and Moral Rights for this thesis are retained by the author and/or other copyright owners.

A copy can be downloaded for personal non-commercial research or study, without prior permission or charge.

This thesis cannot be reproduced or quoted extensively from without first obtaining permission in writing from the copyright holder/s.

The content must not be changed in any way or sold commercially in any format or medium without the formal permission of the copyright holders.

When referring to this thesis, full bibliographic details including the author, title, awarding institution and date of the thesis must be given e.g. AUTHOR (year of submission) "Full thesis title", name of the School or Department, PhD Thesis, pagination.

**School of Oriental & African Studies  
Faculty of Arts & Humanities**

DEPARTMENT OF THE HISTORY OF THE ART AND ARCHAEOLOGY

***MUGHAL GLASS:***  
***Indian Glass from the Late Modern and Early Colonial Period***

**CATALOGUE I & II**

TARA DESJARDINS  
2018

## TABLE OF CONTENTS

### CATALOGUE 1:

#### Introduction

#### Abbreviated list of museums

#### Glossary

#### *Type of object*

#### *Cat.*

Rectangular shaped bottles	1-35
Bottles of other shapes	36-39
Small bottles	40-46
Perfume bottles	47-52
Vases and tall shaped bottles	53-60
Jars (with) lids	61-66
Bowls	67-75
Salvers	76-92
Cups (and saucers)	93-96
Ewers	97-99
<i>Lota</i>	100
<i>Pandan</i> cover	101-102
Basin	103
Footed bowl & plate	104
Candlesticks	105-108
Carpet weight	109-110

### CATALOGUE 2:

Globular <i>huqqa</i> bases	111-155
Bell shaped <i>huqqa</i> bases	156-200
Grenade shaped <i>huqqa</i> bases	201-202
Spittoons	203-209
Objects Not Examined	210-251
Objects of European Manufacture	252-266

## Introduction

This catalogue represents the corpus of known Indian glass objects that are currently within institutions or private collections, or that have passed through public auction within the past fifteen years, since 2003. This catalogue could not possibly reflect all Indian glass from the late modern and early colonial period, but has tried nonetheless to identify as many examples as possible, drawing from a variety of collections across the globe that represent a breadth of styles and techniques.

The cataloguing for each object is largely based on Carboni and Whitehouse's *Glass of the Sultans* (2011) format, which examines the physical traits of each object; the context and descriptive elements have been purposely eliminated from this style of cataloguing in order to allow the reader to focus on the fields that define each object.

Object locations have been given based on historical names associated with regions, provinces, or even cities at the time of production; when more specific attributions cannot be provided, a more general geographical attribution is given, such as northern or eastern India. All dating has also been allocated within twenty-five year periods. Both attributions and dates remain subject to modification.

Due to the number of objects included, the catalogue is divided into two sections (I and II). The first catalogue includes the abbreviated list of collections, the table of contents, glossary and the following types of glass objects: bottles, dining ware vessels, and carpet weights. All of these objects have been seen and/or personally examined. The second catalogue is divided into three sections, including: *huqqa* bases and *spittoons* (again, seen and/or personally examined); objects not yet seen or personally examined; and non-Indian examples, which represent both European examples and those of recent manufacture.

Within each section, the objects are firstly organized by object type and then further arranged by surface decoration or style. While the chronological order often parallels stylistic developments, it does not alone represent the priority for organizing the objects within the catalogues, as the dating for many examples still remains uncertain.

Most of the images for objects seen and/or personally examined were taken by the author (including objects within the European sections), whereas those appearing in the other sections were taken directly from published catalogues or on-line databases. The terms and definitions used in the catalogue descriptions have been further defined in the glossary, which appears at the beginning of catalogue I.

My deepest thanks are extended to every curator, registrar, key bearer, scholar, and collector who has facilitated this global search. The aim of this catalogue is to create a comprehensive and cohesive corpus of material; the author now, in turn, gladly shares this catalogue with all those who have so selflessly shared their knowledge, experience, and objects. To them, I dedicate this catalogue.

Tara Desjardins  
January 2018



## **ABBREVIATED LIST OF COLLECTIONS**

### ***UNITED STATES OF AMERICA***

COR – Corning Museum of Glass, Corning, NY  
MET – Metropolitan Museum of Art, New York, NY  
BMA – Brooklyn Museum of Art, Brooklyn, NY  
VMFA – Virginia Museum of Fine Arts, Richmond, VA  
LTS - Freer Gallery, Smithsonian Institute, Washington DC  
MFA – Museum of Fine Arts, Boston, MA  
LACMA – Los Angeles County Museum of Art, Los Angeles, CA  
SDMA – San Diego Museum of Art, San Diego, CA  
AAM – Asian Art Museum, San Francisco, CA  
TMA – Toledo Museum of Art, Toledo, OH

### ***ENGLAND***

VAM – Victoria & Albert Museum, London  
BM – The British Museum, London  
FWM – The Fitzwilliam Museum, Cambridge  
KCIA – The Khalili Collection of Islamic Art

### ***GERMANY***

SMB – Staatliche Museen zu Berlin, Pergamonmuseum, Berlin  
SMKGH - Stiftung Museum Kunstpalast Glasmuseum Hentrich, Dusseldorf  
MAK – Museum für Angewandte Kunst, Frankfurt

### ***THE NETHERLANDS***

RIJK - Rijksmuseum, Amsterdam

### ***DENMARK***

DC – The David Collection, Copenhagen

### ***FRANCE***

MS – Musée Guimet, Paris

### ***GREECE***

TBMA – The Benaki Museum, Athens

### ***INDIA***

NMD – National Museum of Delhi, New Delhi  
BKB - Bharat Kala Bhavan, Varanasi  
CSMVS – Chhatrapati Maharaj Vastu Sangrahalaya, Mumbai  
MSMS – Maharaja Sawai Man Singh II Museum, The City Palace, Jaipur  
UBP – Umaid Bhavan Palace, Jodhpur  
JKMM - Jagdish & Kamla Mittal Museum of Indian Art, Hyderabad  
SJM – Salar Jung Museum, Hyderabad

### ***KUWAIT***

LNS – Dar al-Athar al-Islamiyya (al Sabah Collection)  
TSR – Tareq Sayed Rajab Museum

## GLOSSARY

(A) Arabic; (H) Hindi; (P) Persian; (S) Sanskrit; (U) Urdu

° Definitions and terms taken from B.N. Goswamy and Caron Smith, *Domains of Wonder: Selected Masterworks of Indian Painting* (2005)

\* Definitions taken from the Corning Museum of Glass online Dictionary

° **Akbar** (1542–1605): Third Mughal emperor. Reigning from 1556 to 1605. Son of Humayun, grandson of Babur, and father of Jahangir. Ascended the throne at the age of thirteen. Known as the most ecumenical of Mughal rulers. Was a supportive and involved patron of his artistic atelier.

\* **Alkali**: In glassmaking, a soluble salt consisting mainly of potassium carbonate or sodium carbonate. It is one of the essential ingredients of glass, generally accounting for about 15-20 percent of the batch. The alkali is a flux, which reduces the melting point of the major constituent of glass, silica.

\* **Annealing**: The process of slowly cooling a completed object in an auxiliary part of the glass furnace, or in a separate furnace. This is an integral part of glassmaking because if a hot glass object is allowed to cool too quickly, it will be highly strained by the time it reaches room temperature; indeed, it may break, either as it cools or at some later date. Highly strained glasses break easily if subjected to mechanical or thermal shock.

\* **Applied Decoration**: Heated glass elements (such as canes and trails) applied during manufacture to a glass object that is still hot, and either left in relief or marvered until they are flush with the surface

° **Appliqué**: A 'hot working' decorative technique where white glass is fused to the surface of an object and fired at a low temperature to adequately melt and adhere to the object's surface, creating a relief base that is then painted on.

\* **Arabesque**: (1) In Islamic art, an intricate pattern of interlaced ornament consisting of curvilinear stems and tendrils that terminate in leaves; (2) in Renaissance and later European art, a pattern of interlaced curvilinear stems, scrolls, and leaves, sometimes containing animal motifs.

° **Aurangzeb** (1618–1707): Sixth Mughal emperor. Took the imperial title Alamgir upon commencing his reign, from 1658 to 1707. Under his rule, the Mughal Empire reached its largest size.

° **Bidri** (H): From the town of Bidar in the Deccan. A metal-working technique, in which silver, gold or brass is inlaid into an alloy base which is then blackened.

\* **Blowing (glass)**: The technique of forming an object by inflating a gather or gob of molten glass on the end of a blowpipe. Traditionally and in modern furnace working, the gaffer blows through the tube, slightly inflating the gob, which is then manipulated into the required form by swinging it, rolling it on a marver, or shaping it with tools or in a mold. It is then inflated to the desired size. In flame working, one end of the glass tube is heated and closed immediately, after which the worker blows into the other end and manipulates the hot glass.

\* **Blowpipe**: An iron or steel tube, usually four to five feet long, for blowing glass. Blowpipes have a mouthpiece at one end and are usually fitted at the other end with a metal ring that helps to retain the gather.

\* **Bow Lathe:** A primitive lathe powered by the use of a bow. The bowstring is looped around the spindle of the lathe and causes it to rotate as the bow is drawn backward and forward.

\* **Bubble:** A pocket of gas trapped in glass during manufacture. The term is used both for bubbles introduced intentionally (known as air traps or beads) and for unwanted bubbles created during the melting process. Very small bubbles are known as seeds.

\* **Cane:** A thin, monochrome rod, or a composite rod consisting of groups of rods of different colours, which are bundled together and fused to form a polychrome design that is visible when seen in cross section

° **Chauri/Chamara (S):** Yak-tail fly whisk, a symbol of sovereignty.

° **Choli (H):** A short, tight blouse.

\* **Cold Painting:** The technique of decorating an object by applying paint such as artists use on other materials. This is in contrast to enameling, in which powdered glasses of various colours are fused to the surface by heating.

\* **Cold Working:** The collective term for the many techniques (such as copper-wheel engraving and cutting) used to alter or decorate glass when it is cold.

\* **Cord (or cording):** A part of the glass that differs in composition from the surrounding matrix. This difference produces a change in the refractive index, which enables the cord to be seen as a streak and so spoils the appearance of the glass.

\* **Crizzling:** The result of chemical instability in glass caused by an imbalance in the ingredients of the batch, particularly an excess of alkali or a deficiency of stabilizer (usually lime). The instability of the glass results in an attack by atmospheric moisture, which produces a network of cracks in the surface that may feel damp or oily. Crizzling can be slowed or perhaps even halted, but it cannot at present be reversed. Crizzled glass is sometimes described as “sick” or “weeping.”

\* **Cullet:** (1) Raw glass or pieces of broken glass from a cooled melt, intended for use as an ingredient of batch; (2) scrap glass intended for recycling.

\* **Enamel:** A vitreous substance made of finely powdered glass coloured with metallic oxide and suspended in an oily medium for ease of application with a brush. The medium burns away during firing in a low-temperature muffle kiln (about 965°-1300°F or 500°-700°C). Sometimes, several firings are required to fuse the different colours of an elaborately enameled object.

\* **Flashing (flushed glass):** (1) The application of a very thin layer of glass of one colour over a layer of contrasting colour. This is achieved by dipping a gather of hot glass into a crucible containing hot glass of the second colour. The upper layer may be too thin to be worked in relief. “Flashing” is sometimes used (erroneously) as a synonym for casing. (2) The act of reheating a parison by inserting it into a glory hole and then withdrawing it rapidly.

\* **Flint Glass:** A misnomer for English and American lead glass. The term came into use in 1674, when George Ravenscroft’s new glass formula included ground, calcined flint as a source of silica. In the 18th and 19th centuries, the term was applied to decolourized glass, even when it contained no flint.

\* **Free-Blown Glass:** Glassware shaped solely by inflation with a blowpipe and manipulation with tools.

\* **Gilding:** The process of decorating glass by the use of gold leaf, gold paint, or gold dust. The gilding can be applied with size, or amalgamated with mercury. It is then usually attached to the glass by heat. Gold leaf can be picked up on a gather of hot glass.

° **Guru** (S): Teacher and spiritual master.

° **Huqqa** (A): Water pipe.

° **Janghia** (H): A short loin cloth.

° **Jahangir** (1569–1627): Fourth Mughal emperor and son of Akbar.

° **Jama** (P): Sewn over garment, like a tunic.

° **Katar** (H): The characteristic Indian thrusting dagger with a double-edged blade and a transverse grip between two parallel bars.

° **Khanjar** (A): A dagger, of which the Indian type has a double-edged, single or double curved blade. The hilt is often shaped like a pistol-grip or carved as an animal's head, usually from hardstone or ivory.

\* **Kick (kicked-in base):** A concavity in the base of a vessel, usually made by depressing the base with a tool. The provision of a kick strengthens the bottom of the vessel and reduces the vessel's capacity.

\* **Knob:** A component, usually bulbous, of the stem of a drinking glass, hollow or solid, used either singly or in groups, and placed contiguously or with intermediate spacing; also the finial at the center of a lid.

\* **Lattimo:** (from Italian latte, "milk") Opaque white glass, usually opacified by tin oxide or arsenic.

° **Layla and Majnun:** The classical Arab story of two lovers forced to remain apart, popularized by the poet Nezami in the Khamsa.

\* **Lead Glass:** Glass that contains a high percentage of lead oxide (at least 20 percent of the batch). In modern times, glass of this type was patented in 1674 by George Ravenscroft (1632-1683), who added a larger amount of lead in 1676. Lead glass is relatively soft, and its refractive index gives a brilliance that may be exploited by covering the surface with polished wheel-cut facets. Such glass is often known by the term "lead crystal."

° **Lota** (H): A small, round, metal pot.

\* **Moil:** The unwanted top of a blown object. When the last stage in the forming process is the removal of the object from the blowpipe, the result is a narrow opening that almost certainly is not what the glassblower desires. After annealing, therefore, the top of the object is removed, usually by cracking off. The moil from a mould-blown object is often known as an overblow.

**Morchhal** (H): A ceremonial peacock-feather fan or fly whisk.

\* **Mold/Mould:** A form used for shaping and/ or decorating molten glass. Some molds (e.g., dip molds) impart a pattern to the parison, which is then withdrawn, and blown and tooled to the desired shape and size; other molds (sometimes known as full-size molds) are used to give the object its final form, with or without decoration. Dip molds consist of a single part and are usually shaped like beakers. Full-size molds usually have two or more parts and can be opened to extract the object. Nowadays, most molds are made of metal, but stone, wood, plaster, and earthenware molds were used in the past and are still occasionally employed today.

\* **Nipt-Diamond-Waies:** The technique of manipulating adjacent vertical ribs with pincers to form a diamond pattern. “Nipt-diamond-waies” was the term used by the English glassmaker George Ravenscroft (1632-1683) in a 1677 advertisement for his new lead glass.

\* **Optic Mould:** A cylindrical or truncated conical one-piece mould with a patterned interior. The mould is open at the top so that a parison can be dipped into it and then inflated. It is also known as a dip mould.

° **Paijama (P):** Loose trousers, usually of a thin material.

° **Pandan (H,P):** A box in which betel is kept.

° **Patka (H):** Sash worn by nobility.

° **Peshwaz (U):** Ankle-length transparent over garment.

\* **Pontil:** The pontil, or punty, is a solid metal rod that is usually tipped with a wad of hot glass, then applied to the base of a vessel to hold it during manufacture. It often leaves an irregular or ring-shaped scar on the base when removed. This is called the “pontil mark.”

\* **Prunt:** A blob of glass applied to a glass object primarily as decoration, but also to afford a firm grip in the absence of a handle.

° **Ragamala (H):** A series of thirty-six or forty-two ragas with poetic texts illustrated by Indian painters. (from another entry:) “Garland of musical modes.” A series of sequential illustrations depicting musical modes and associated poetic texts. Conceived of as a family comprising male ragas, their “wives” (raginis), and their sons and daughters (ragaputras and ragaputris). Ragamala series vary between thirty-six and forty-two illustrations.

° **Rajput:** Hindu ruling clans in northwest and central India of the kshatriya caste.

\* **Relief Cutting:** A type of cut glass with decoration in high relief, made by removing the background.

**Sarpesh (P/U):** Turban ornament.

\* **Seeds:** Minute bubbles of gas, usually occurring in groups.

° **Shah Jahan (1592–1666):** Fifth Mughal emperor and favorite of his grandfather, Akbar. His rule is often considered the Golden Age of the Mughals.

\* **Soda-Lime Glass:** Historically, the most common form of glass. It contains three major compounds in varying proportions, but usually silica (about 60-75 percent), soda (12-18 percent), and lime (5-12 percent). Soda-lime glasses are relatively light, and upon heating, they remain plastic and workable over a wide range of temperatures. They lend themselves, therefore, to elaborate manipulative techniques.

° **South Asia:** Term used to refer predominantly to India along with its adjacent nations, defined by their modern political boundaries as Pakistan, Afghanistan, Nepal, Bangladesh, and Sri Lanka.

° **Sufi:** A mystical Islamic sect. Adherents are known as Sufis or Dervishes.

° **Talwar (H):** A type of sword developed in India during the Mughal period. The blade is slightly curved with the reverse sharpened along a broader section near the tip, the fore edge blunt at the ricasso. The hilt usually has a disc pommel and domed quillons.

\* **Tool (Tooling or Tooled):** Any instrument used by glassworkers to develop and shape an object. Glassworkers' tools include the blowpipe, pontil, gathering iron, jacks, shears, clapper, pallet, block, pincers, battledore, lipper, and crimper.

° **Vina (S):** The primary stringed instrument of classical Indian music which occurs in both North and South Indian varieties. It is fretted with four strings over the frets and three to provide a drone.

\* **Weathering:** Changes on the surface of glass caused by chemical reaction with the environment. Weathering usually involves the leaching of alkali from the glass by water, leaving behind siliceous weathering products that are often laminar.

\* **Wheel Engraving (wheel-cut):** A process of decorating the surface of glass by the grinding action of a wheel, using disks of various sizes and materials (usually copper, but sometimes stone), and an abrasive in a grease or slurry applied to a wheel, as the engraver holds the object against the underside of the rotating wheel.



*Object name:* LARGE RECTANGULAR BOTTLE

*Region:* Gujarat or Rajasthan

*Date:* 1700-25

*Dimensions:* Height: 27 cm – Width of base: 10.6 cm – Weight: 1006.5 g

*Colour:* Translucent olive green glass; red, orange, black, white, brown; gold

*Technique:* Mould blown and drawn; tooled on the pontil; painted; gilded

*Description:* Large rectangular bottle; rising to a short cylindrical neck with a rounded tooled rim; slight concave base presenting a diagonal mould mark (indicating a two-part mould) and an unpolished pontil mark in the center; sloping shoulders; each side cold painted with a different image depicting figures dressed in European clothing standing beneath a hanging tree, framed by a gold polylobed arch; one side depicts an amorous couple, the man's arm and leg wrapped around the woman as she reaches towards a small naked boy; another side depicts a similarly amorous couple in each other's arms, holding a small wine bottle and cup, with a small dog by their feet; another side (almost entirely worn) depicts a man in profile with a bird perched on

this right hand, the faint outline of a woman dress in front, holding a small cup; fourth side decorated with a female attendant in profile holding a wine bottle, in front of a faintly outlined woman seated in a large chair; neck and upper shoulder gilt painted with three rows of floral and vegetal scrolls alternating with solid gilt bands.

*Condition:* Object is intact with significant paint loss on two of the sides; gilt worn around the upper shoulder; gilt strongly discoloured; seeds; minor inclusions.

*Location:* Metropolitan Museum of Art, New York (Acc. No. 971.234)

*Credit Line:* Fletcher Fund, 1971

*Provenance:* John J. Klejman

*Related Works:* Dikshit, Plate XLI.A; Christie's South Kensington 11 April 2014, lot 183







A

B

*Object name:* TWO BOTTLES

*Region:* Gujarat or Rajasthan

*Date:* 1725 -75

*Dimensions:* Height: 10.6 cm – Length: 6.3 cm – Width: 6.3 cm – Weight: 373.0 g and 423.8 g

*Colour:* Translucent greyish colourless glass; red, blue, yellow, green; white; black; gold

*Technique:* Mould blown; tooled on the pontil; painted; gilded

*Description:* Rectangular bottle; slight concave base with a diagonal mould mark (indicating a two-part mould) and a small unpolished pontil mark in the center; sloping shoulder extending towards a short cylindrical neck with a splayed, tooled rim decorated with gold vertical dashes; shoulder decorated with a running pattern of polychrome and gilt outlined blossoms and leaves, framed by a triangle and tripartite leaf pattern and solid gilt bands; each side of the body is decorated with a different image or floral motif set against a background of dense gilt foliage, enclosed within a gilt polylobed arch with fine herringbone bands along the edges.

Bottle A: Two men standing in profile dressed in European clothing with pointed hats, each holding a long riffle; on the opposing side, a hunter rides on horseback, carrying a rifle over his shoulder and wearing a European style hat; seven drooping white and red lilies stemming from a single vegetal tuft decorate the other two sides.

Bottle B: Two women stand, their arms interlocked and touching one another's mouth; both are dressed in long patterned coats over slender *paijamas*, adorned with strands of pearls; on the opposing side, a woman sits on a throne chair while a young turbaned boy makes a gesture or offering; nine deep blue floral sprays stemming from a single vegetal tuft decorate the other two sides.

*Condition:* Both objects are intact but one has a crack at the base; parts of enamel and gilt worn; numerous small air bubbles; slight milky film.

*Provenance:* Amir Mohtashemi, London; acquired directly from a Private Collection, United Kingdom

*Published:* Amir Mohtashemi, March 2014

*Related Works:* MAK 13195 A+B; LACMA M.88.129.198; LACMA M.88.129.199; LACMA M.88.129.200; LACMA M.88.129.201; LACMA M.88.129.202; LACMA M.88.129.203; COR 59.1.583; COR 2002.1.1; SMKGH P.1989-50; MET 21.26.11; TSR 711-GSL; TSR 712-GSL; LNS 82G; VAM IS.17-1867



A

B



A

B

*Object name:* TWO BOTTLES

*Region:* Gujarat or Rajasthan

*Date:* 1725-75

*Dimensions:* Height: 9.8 cm - Length: 5.5 cm - Width: 5.5 cm

*Colour:* Translucent greyish colourless; red, pink, green, black, yellow, white, blue; gold

*Technique:* Mould blown; tooled on the pontil; painted; gilded

*Description:* Rectangular bottle; slight concave base with a diagonal mould mark (indicating a two-part mould) and a small unpolished pontil mark in the center; sloping shoulder extending towards a short cylindrical neck with a splayed, tooled rim decorated with gold vertical dashes; shoulder decorated with a running pattern of polychrome and gilt outlined blossoms and leaves, framed by a triangle and tripartite leaf pattern and solid gilt bands; each side of the body is decorated with a different image or floral motif set against a background of dense gilt foliage, enclosed within a gilt polylobed arch with fine herringbone bands along the edges; two opposing sides are decorated with three red floral sprays stemming from a single vegetal tuft.

Bottle A: A lady sits behind a red wheel, spinning gold thread; she is dressed in a long blue and yellow skirt (*lahanga*) and cropped white blouse (*choli*); on the opposing side two men stand, with one placing his hand upon the other's shoulder; they are both dressed in long *jamas* (coats) with coloured waist sashes (*patkas*).

Bottle B: A man wrestles with a standing bear; he wears cropped pajama pants and a shortened *jama*, with a yellow *patka*; on the



opposing side a young hunter on white horseback stabs a tiger with his sword, as he holds a shield (*dhal*).

**Condition:** Both bottles are intact with some wear of gilt and paint.

**Location:** Museum für Angewandte Kunst, Frankfurt (Acc. No. 13195 A+B)

**Published:** Klesse & Reineking-von Bock, *Glas*, 1973, fig. 104a+b; Frankfurt, 1974, fig. 111-116

**Related Works:** LACMA M.88.129.198; LACMA M.88.129.199; LACMA M.88.129.200; LACMA M.88.129.201; LACMA M.88.129.202; LACMA M.88.129.203; COR 59.1.583; COR 2002.1.1; SMKGH P.1989- 50; MET 21.26.11; TSR 711-GSL; TSR 712-GSL; LNS 82G; VAM IS.17-1867



A

B



A

B



*Object name:* BOTTLE

*Region:* Gujarat or Rajasthan

*Date:* 1725-75

*Dimensions:* Height: 13.6 cm – Length: 6.5 cm – Width: 6.3 cm – Weight: 265.0 g

*Colour:* Translucent greyish colourless; red, pink, pale green, black, beige, yellow, white, dark blue; gold

*Technique:* Mould blown; tooled on the pontil; painted; gilded

*Description:* Rectangular bottle; slight concave base with a diagonal mould mark (indicating a two-part mould) and a small unpolished pontil mark in the center; sloping shoulder extending towards a tall cylindrical neck with a splayed, tooled rim decorated with gold vertical dashes; shoulder decorated with a running pattern of polychrome and gilt outlined blossoms and leaves, framed by a triangle and tripartite leaf pattern and solid gilt bands; each side of the body is decorated with a different image or floral motif set against a background of dense gilt foliage, enclosed within a gilt polylobed arch with fine herringbone bands along the edges; two opposing sides are decorated with three

red floral sprays stemming from a single vegetal tuft; another side depicts a young man seated on a green and yellow throne chair pointing his finger to his mouth; he is dressed in a long red *jama* and blue *patka*, with a *khanjar* (dagger) tucked into it; on the opposing side, a woman stands with one leg crossed over her knee, grasping at a hanging branch, with a bell-collared deer gazing towards her; she wears a long blue coat over yellow *paijama* (pants), adorned with jewels.

*Condition:* Object is intact with minor wear of gilt; numerous small air bubbles and seeds.

*Location:* Los Angeles County Museum of Art (Acc. No. M.88.129.198)

*Credit Line:* Gift of Varya and Hans Cohn

*Related Works:* MAK 13195 A+B; LACMA M.88.129.199; LACMA M.88.129.200; LACMA M.88.129.201; LACMA M.88.129.202; LACMA M.88.129.203; COR 59.1.583; COR 2002.1.1; SMKGH P.1989- 50; MET 21.26.11; TSR 711-GSL; TSR 712-GSL; LNS 82G; VAM IS.17-1867







*Object name:* BOTTLE

*Region:* Gujarat or Rajasthan

*Date:* 1725-75

*Dimensions:* Height: 10.5 cm - Length: 5.7 cm - Width: 5.5 cm – Weight: 198.2 g

*Colour:* Translucent greyish colourless; red, pink, pale green, black, beige, yellow, white, dark blue; gold

*Technique:* Mould blown; tooled on the pontil; painted; gilded

*Description:* Rectangular bottle; slight concave base with a diagonal mould mark (indicating a two-part mould) and a small unpolished pontil mark in the center; sloping shoulder extending towards a short cylindrical neck with a splayed, tooled rim decorated with gold vertical dashes; shoulder decorated with a running pattern of polychrome and gilt outlined blossoms and leaves, framed by a triangle and tripartite leaf pattern and solid gilt bands; each side of the body is decorated with a different image or floral motif set against a background of dense gilt foliage, enclosed within a gilt polylobed arch with fine herringbone bands along the edges; two opposing sides are decorated with three red floral sprays stemming from a single vegetal tuft; another side

depicts a woman standing with her right hand extended in front; she wears a blue and green *lahanga* (skirt) and yellow *choli* (cropped blouse) and is adorned with jewels; on the opposing side, a woman sits on a white and hold throne chair with her hand pointed towards her mouth, and dressed in a similar manner.

*Condition:* Object is intact with minor wear of gilt; numerous small air bubbles and seeds.

*Location:* Los Angeles County Museum of Art (Acc. No. M.88.129.199)

*Credit Line:* Gift of Varya and Hans Cohn

*Related Works:* MAK 13195 A+B; LACMA M.88.129.198; LACMA M.88.129.200; LACMA M.88.129.201; LACMA M.88.129.202; LACMA M.88.129.203; COR 59.1.583; COR 2002.1.1; SMKGH P.1989- 50; MET 21.26.11; TSR 711-GSL; TSR 712-GSL; LNS 82G; VAM IS.17-1867







*Object name:* BOTTLE

*Region:* Gujarat or Rajasthan

*Date:* 1725-75

*Dimensions:* Height: 13.7 cm – Length: 6.3 cm – Width: 5.9 cm – Weight: 296.7 g

*Colour:* Translucent greyish colourless; red, pink, pale green, black, beige, yellow, white, dark blue; gold

*Technique:* Mould blown; tooled on the pontil; painted; gilded

*Description:* Rectangular bottle; slight concave base with a diagonal mould mark (indicating a two-part mould) and a small unpolished pontil mark in the center; sloping shoulder extending towards a tall cylindrical neck with a splayed, tooled rim decorated with gold vertical dashes; shoulder decorated with a running pattern of polychrome and gilt outlined blossoms and leaves, framed by a triangle and tripartite leaf pattern and solid gilt bands; each side of the body is decorated with a different image or floral motif set against a background of dense gilt foliage, enclosed within a gilt polylobed arch with fine herringbone bands along the edges; two opposing sides are decorated with seven red drooping floral sprays stemming from a single vegetal tuft;

another side depicts a young man seated in a blue and white throne chair pointing his finger towards his mouth, as a white crane stands before him; he is dressed in a long green *jama* with yellow *patka* and red turban; on the opposing side, a woman sits in a similar red throne chair, pointing to her mouth as a small boy stands with his arms extended towards her; she wears a blue and white *lahanga* and green *choli*, and he a yellow loin cloth, small cap, and strap of bells around his shoulder.

*Condition:* Object is intact with a visible crack around the upper shoulder (formerly broken and restored); numerous small air bubbles and seeds; minor wear of gilt.

*Location:* Los Angeles County Museum of Art (Acc. No. M.88.129.200)

*Credit Line:* Gift of Varya and Hans Cohn

*Related Works:* MAK 13195 A+B; LACMA M.88.129.198; LACMA M.88.129.201; LACMA M.88.129.202; LACMA M.88.129.203; COR 59.1.583; COR 2002.1.1; SMKGH P.1989- 50; MET 21.26.11; TSR 711-GSL; TSR 712-GSL; LNS 82G; VAM IS.17-1867





*Object name:* BOTTLE

*Region:* Gujarat or Rajasthan

*Date:* 1725 - 50

*Dimensions:* Height: 13.2 cm – Length: 6.2 cm – Width: 6.4 cm

*Colour:* Translucent greyish colourless; red, pink, pale green, black, beige, yellow, white, dark blue; gold

*Technique:* Mould blown; tooled on the pontil; painted; gilded

*Description:* Rectangular bottle; slight concave base with a diagonal mould mark (indicating a two-part mould) and a small unpolished pontil mark in the center; sloping shoulder extending towards a tall cylindrical neck with a splayed, tooled rim decorated with gold vertical dashes; shoulder decorated with a running pattern of polychrome and gilt outlined blossoms and leaves, framed by a triangle and tripartite leaf

pattern and solid gilt bands; each side of the body is decorated with a different image or floral motif set against a background of dense gilt foliage, enclosed within a gilt polylobed arch with fine herringbone bands along the edges; two opposing sides are decorated with nine white and red floral sprays stemming from a single vegetal tuft; on one side, a woman sits in a white and green throne chair, pointing her finger towards her mouth while a white dog wearing a bell collar sits on her lap; she wears a blue and red *lahanga* and yellow *choli*; on the opposing side, a man and woman stand facing each other.

*Condition:* Object is intact with minor wear of gilt; numerous small air bubbles and seeds.

*Location:* Los Angeles County Museum of Art (Acc. No. M.88.129.201)

*Credit Line:* Gift of Varya and Hans Cohn

*Published:* Carboni & Whitehouse 2001, cat. 140, pp. 286-7

*Related Works:* MAK 13195 A+B; LACMA M.88.129.198; LACMA M.88.129.199; LACMA M.88.129.200; LACMA M.88.129.202; LACMA M.88.129.203; COR 59.1.583; COR 2002.1.1; SMKGH P.1989- 50; MET 21.26.11; TSR 711-GSL; TSR 712-GSL; LNS 82G; VAM IS.17-1867



*Object name:* BOTTLE

*Region:* Gujarat or Rajasthan

*Date:* 1725-75

*Dimensions:* Height: 10.6 cm – Length: 6.3 cm – Width: 6.3 cm – Weight: 200.8 g

*Colour:* Translucent greyish colourless; red, pink, pale green, black, beige, yellow, white, dark blue; gold

*Technique:* Mould blown; tooled on the pontil; painted; gilded

*Description:* Rectangular bottle; slight concave base with a diagonal mould mark (indicating a two-part mould) and a small unpolished pontil mark in the center; sloping shoulder extending towards a tall cylindrical neck with a splayed, tooled rim decorated with gold vertical dashes; shoulder decorated with a running pattern of polychrome and gilt outlined blossoms and leaves, framed by a triangle and tripartite leaf pattern and solid gilt bands; each side of the body is decorated with a different image or floral motif set against a background of dense gilt foliage, enclosed within a gilt polylobed arch with fine herringbone bands along the edges; two opposing sides are decorated with six blue



floral sprays stemming from a single vegetal tuft; another side depicts a youthful archer dressed in a green loincloth and blue cloth tied around his sack, as two white dogs run by his side; on the opposing side, a woman walks with a collared deer who gazes back towards her; she is dressed in a red striped *lahanga* and white *choli*, and adorned with jewels.

*Condition:* Object is intact with minor wear of gilt; numerous small air bubbles and seeds.

*Location:* Los Angeles County Museum of Art (Acc. No. M.88.129.202)

*Credit Line:* Gift of Varya and Hans Cohn

*Related Works:* MAK 13195 A+B; LACMA M.88.129.198; LACMA M.88.129.199; LACMA M.88.129.200; LACMA M.88.129.201; LACMA M.88.129.203; COR 59.1.583; COR 2002.1.1; SMKGH P.1989-50; MET 21.26.11; TSR 711-GSL; TSR 712-GSL; LNS 82G; VAM IS.17-1867





- Object name:* BOTTLE  
*Region:* Gujarat or Rajasthan  
*Date:* 1725-75  
*Dimensions:* Height: 13.3 cm – Length: 6.3 cm – Width: 6.8 cm – Weight: 272.1g  
*Colour:* Translucent greyish colourless; red, pink, pale green, black, beige, yellow, white, dark blue; gold  
*Technique:* Mould blown; tooled on the pontil; painted; gilded  
*Description:* Rectangular bottle; slight concave base with a diagonal mould mark (indicating a two-part mould) and a small unpolished pontil mark in the center; sloping shoulder extending towards a tall cylindrical neck with a splayed, tooled rim decorated with gold vertical dashes; shoulder decorated with a running pattern of polychrome and gilt outlined blossoms and leaves, framed by a triangle and tripartite leaf pattern and solid gilt bands; each side of the body is decorated with a different image or floral motif set against a background of dense gilt foliage, enclosed within a gilt polylobed arch with fine herringbone bands along the edges; two opposing sides are decorated with six

yellow and red floral sprays stemming from a single vegetal tuft; another side depicts two standing women, the lady behind places her right hand upon the lady's shoulder; they are both dressed in long *lahangas* and cholis and adorned with necklaces; on the opposing side, a woman dressed in only her white *lahanga* rises from a yellow and green throne chair, while a kneeling female attendant holds (messages or cleans) her legs; the bathing lady is adorned in gold jewels.

*Condition:* Object is intact with minor wear of gilt; numerous small air bubbles and seeds.

*Location:* Los Angeles County Museum of Art (Acc. No. M.88.129.203)

*Credit Line:* Gift of Varya and Hans Cohn

*Published:* Carboni & Whitehouse, 2001, cat. 141, p. 286-7

*Related Works:* MAK 13195 A+B; LACMA M.88.129.198; LACMA M.88.129.199; LACMA M.88.129.200; LACMA M.88.129.201; LACMA M.88.129.202; COR 59.1.583; COR 2002.1.1; SMKGH P.1989- 50; MET 21.26.11; TSR 711-GSL; TSR 712-GSL; LNS 82G; VAM IS.17- 1867







*Object Name:* BOTTLE

*Region:* Gujarat or Rajasthan

*Date:* 1725-75

*Dimensions:* Height: 13 cm – Width: 6.2 cm

*Colour:* Transparent greyish colourless; green, blue, white, pink, black, yellow, red; gold

*Technique:* Mould blown; tooled on the pontil; painted; gilded

*Description:* Rectangular bottle; slight concave base with a diagonal mould mark (indicating a two-part mould) and a small unpolished pontil mark in the center; sloping shoulder extending towards a tall cylindrical neck with a splayed, tooled rim decorated with gold vertical dashes; shoulder decorated with a running pattern of polychrome and gilt outlined blossoms and leaves, framed by a triangle and tripartite leaf pattern and solid gilt bands; each side of the body is decorated with a different image or floral motif set against a background of dense gilt foliage, enclosed within a gilt polylobed arch with fine herringbone

bands along the edges; two opposing sides are decorated with three yellow and red floral sprays stemming from a single vegetal tuft; on one side, a woman sits in a blue and white throne chair extending her arms towards a small boy dressed only in blue loincloth (*janghia*), she is dressed in a red striped *lahanga* and blue *choli*; on the opposing side, two women stand facing one another, their fingers pointed towards their mouths; they are dressed in a similar manner to the other lady, and adored with jewels.

**Condition:** Intact and in good condition, with minor wear of gilt; numerous air bubbles scattered throughout the glass.

**Location:** Corning Museum of Glass, New York (Acc. No. 59.1.583)

**Provenance:** Nijstad, J., Source

**Published:** *Escort Guide to the Galleries* (2013) illustrated, p. 27; *The Corning Museum of Glass, A Guide to the Collections* (2001) p. 99; Dikshit 1969, p. 109-110, Plate XXXVIII

**Related Works:** MAK 13195 A+B; LACMA M.88.129.198; LACMA M.88.129.199; LACMA M.88.129.200; LACMA M.88.129.201; LACMA M.88.129.202; LACMA M.88.129.203; COR 2002.1.1; SMKGH P.1989-50; MET 21.26.11; TSR 711-GSL; TSR 712-GSL; LNS 82G; VAM IS.17-1867





**Object Name:** FOUR BOTTLES WITH FUNNEL

**Region:** Gujarat or Rajasthan

**Date:** 1725-75

**Dimensions:** Height: 15.1 cm

**Colour:** Translucent greyish colourless; green, blue, white, pink, black, yellow, red; gold

**Technique:** Mould blown; tooled on the pontil; painted; gilded

**Description:** Rectangular bottle; slight concave base with a diagonal mould mark (indicating a two-part mould) and a small unpolished pontil mark in the center; sloping shoulder extending towards a tall cylindrical neck with a splayed, tooled rim decorated with gold vertical dashes; shoulder decorated with a running pattern of polychrome and gilt outlined blossoms and leaves, framed by a triangle and tripartite leaf pattern and solid gilt bands; each side of the body is decorated with a different image or floral motif set against a background of dense gilt foliage, enclosed within a gilt polylobed arch with fine herringbone bands along the edges. Funnel with a small handle added; wooden box with hinged lid, three brass handles and a brass lock; interior divided into sections for four flasks and a cavity for the funnel.

Bottle A: A couple stand facing one another, their hands extending palm to palm; he wears a long yellow *jama* over striped green *paijamas* and is adorned with a string of pearls and golden sash tied around his blue head turban; she is equally adorned with strings of pearls and jewels in her hair, wearing a *choli* and a long blue and red *lahanga*; on the opposing side, a man sits in a white throne chair, his arm raised towards his mouth, and dressed in a green *jama* and yellow *patka*; on the floor a red spherical *huqqa* stands; on the other sides a floral spray of seven yellow lilies stems from a single vegetal tuft.

Bottle B: A lady stands upon a white throne chair combing another lady's hair, as she sits in front, dressed in only a red *lahanga*, her bare breasts revealed; she is adorned with strands of pearls (or flowers) in

her hair; on the opposite side, two women stand facing the same direction, one lady points to her mouth while the other clasps her extended wrist; both are heavily adorned in strands of pearls and hair ornamentation; on the other sides, white and red flowers hang from a single vegetal tuft.

Bottle C: A woman sits on a white throne chair, leaning forward as she pours out the contents from a red *lota* (water carrier), dressed in a long green and red *lahanga* decorated with small black flowers and a *choli*; she is adorned with a necklace and white flowers in her hair; on the opposing side, a man and woman stand facing one another in profile, one hand raised and each place against the other's chest, her hand touching his forehead; she is dressed in a long striped *lahanga* and yellow *choli*, and he in a dark blue *jama* with green sash and red turban; on the other sides a floral spray of eight white and red flowers stemming from a single vegetal tuft.

Bottle D: A bathing lady stands with bare breasts and long green *lahanga*, tying her hair, she stands opposite a female attendant who holds a cloth; on the opposing side, a woman turns her head to gaze back at the lady standing behind her; both are dressed in long striped *lahangas* (red and blue), one holds a stand of gold flowers (bells or necklace); on the opposing sides a floral spray of six hanging yellow flowers stemming from a single vegetal tuft.

*Condition:* Excellent condition with some minor wear of gilt

*Location:* Corning Museum of Glass (Acc. No. 2002.1.1)

*Provenance:* Poulain le Fur sale, France, 2002, lot 209.

*Published:* *Glass: A Short History* (2012), p. 58; *The Corning Museum of Glass Annual Report* (2003), p. 6.

*Related Works:* MAK 13195 A+B; LACMA M.88.129.198; LACMA M.88.129.199; LACMA M.88.129.200; LACMA M.88.129.201; LACMA M.88.129.202; LACMA M.88.129.203; COR 59.1.583; SMKGH P.1989-50; MET 21.26.11; TSR 711-GSL; TSR 712-GSL; LNS 82G; VAM IS.17-1867





**C**

**A**

**D**

**B**



**C**

**A**

**D**

**B**



- Name:* BOTTLE
- Region:* Gujarat or Rajasthan
- Date:* 1725-75
- Dimensions:* Height: 9.9 cm - Width: 5.7 cm
- Colour:* Translucent greyish colourless, clear; red, pink, green, black, yellow, white, blue; gold
- Technique:* Mould blown; tooled on the pontil; painted; gilded
- Description:* Rectangular bottle; slight concave base with a diagonal mould mark (indicating a two-part mould) and a small unpolished pontil mark in the center; sloping shoulder extending towards a short cylindrical neck with a splayed, tooled rim decorated with gold vertical dashes; shoulder decorated with a running pattern of polychrome and gilt outlined blossoms and leaves, framed by a triangle and tripartite leaf pattern and solid gilt bands; each side of the body is decorated with a different image or floral motif set against a background of dense gilt foliage, enclosed within a gilt polylobed arch with fine herringbone bands along the edges; two opposing sides are decorated with seven

red and pink floral sprays stemming from a single vegetal tuft; on the other side, a man and woman stand facing one another, his hand placed around her waist with her hand upon his shoulder; she is dressed in a striped *lahanga* and blue *choli*, and he in a red *jama* and green *patka*; on the opposing side, a woman stands with one leg crossed over her knee, grasping at a hanging branch while a collared deer stands gazing towards her.

*Condition:* Object is intact with minor wear of gilt and paint; numerous air bubbles and seeds scattered throughout the glass.

*Location:* Stiftung Museum Kunstpalast Glasmuseum Hentrich, Dusseldorf (Acc. No. P.1989-50)

*Published:* Ricke 1985, S. 51, Abb. 10; Ricke 1989, cat. 205; Ricke, 1995, S. 132, Nr.208

*Related Works:* MAK 13195 A+B; LACMA M.88.129.198; LACMA M.88.129.199; LACMA M.88.129.200; LACMA M.88.129.201; LACMA M.88.129.202; LACMA M.88.129.203; COR 59.1.583; COR 2002.1.1; MET 21.26.11; TSR 711-GSL; TSR 712-GSL; LNS 82G; VAM IS.17-1867







*Object name:* BOTTLE

*Region:* Gujarat or Rajasthan

*Date:* 1725-75

*Dimensions:* Height: 14 cm – Weight: 316.4 g

*Colour:* Translucent greyish colourless; red, pink, pale green, black, yellow, white, dark blue; gold

*Technique:* Mould blown; tooled on the pontil; painted; gilded

*Description:* Rectangular bottle; slight concave base with a diagonal mould mark (indicating a two-part mould) and a small unpolished pontil mark in the center; sloping shoulder extending towards a tall cylindrical neck with a splayed, tooled rim decorated with gold vertical dashes; shoulder decorated with a running pattern of polychrome and gilt outlined blossoms and leaves, framed by a triangle and tripartite leaf pattern and solid gilt bands; each side of the body is decorated with a different image or floral motif set against a background of dense gilt foliage, enclosed within a gilt polylobed arch with fine herringbone bands along the edges; two opposing sides are decorated with blue



floral sprays stemming from a single vegetal tuft; another side depicts a standing man facing a woman, holding her wrist; she is dressed in a blue and green *lahanga* and yellow *choli*, and he a red *jama* with green *patka*; on the opposing side, a woman stands with one leg crossed over her knee, grasping at a hanging branch while a collared deer gazes towards her.

**Condition:** Upper neck broken with visible crack descending towards the shoulder; bottom corner broken and missing; minor wear of gilt; small air bubbles and seeds.

**Location:** Metropolitan Museum of Art, New York (Acc. No. 21.26.11)

**Credit Line:** Rogers Fund, 1921

**Provenance:** Hagop Kevorkian, New York, until 1921; his sale, Anderson Galleries, New York, January 26–29, 1921, lot 714, to MMA

**Related Works:** MAK 13195 A+B; LACMA M.88.129.198; LACMA M.88.129.199; LACMA M.88.129.200; LACMA M.88.129.201; LACMA M.88.129.202; LACMA M.88.129.203; COR 59.1.583; COR 2002.1.1; SMKGH P.1989-50; TSR 711-GSL; TSR 712-GSL; LNS 82G; VAM IS.17-1867





- Name:* BOTTLE
- Region:* Gujarat or Rajasthan
- Date:* 1725 - 75
- Dimensions:* Height: 12.7 cm - Width: 6.3 cm - Weight: 282.4 g
- Colour:* Translucent greyish colourless; red, pink, pale green, black white, yellow, white, dark blue; gold
- Technique:* Mould blown; tooled on the pontil; painted; gilded
- Description:* Rectangular bottle; slight concave base with a diagonal mould mark (indicating a two-part mould) and a small unpolished pontil mark in the center; sloping shoulder extending towards a tall cylindrical neck with a splayed, tooled rim decorated with gold vertical dashes; shoulder decorated with a running pattern of polychrome and gilt outlined blossoms and leaves, framed by a triangle and tripartite leaf pattern and solid gilt bands; each side of the body is decorated with a different image or floral motif set against a background of dense gilt foliage, enclosed within a gilt polylobed arch with fine herringbone

bands along the edges; two opposing sides are decorated with three blue floral sprays stemming from a single vegetal tuft; another side depicts a man facing a woman, holding her wrist; she is dressed in a blue and yellow *lahanga* and green *choli*, and he in a red *jama* with green *patka*; on the opposing side, a woman sits in a green and yellow throne chair, with one leg crossed over her knee and her finger pointing towards her mouth; she is dressed in a printed yellow *lahanga* with red *choil*, and is adorned with jewelry.

*Condition:* The body is intact and in good general condition with slight wear of paint and gilt; numerous seeds, with and small air bubble concentrated around the base

*Location:* Tareq Rajab Museum, Kuwait (Acc. No. GSL-711-TSR)

*Provenance:* Sammlung Krug, No. 119 (label on base)

*Published:* *Tareq Rajab Museum* (2013), p. 60

*Related Works:* MAK 13195 A+B; LACMA M.88.129.198; LACMA M.88.129.199; LACMA M.88.129.200; LACMA M.88.129.201; LACMA M.88.129.202; LACMA M.88.129.203; COR 59.1.583; COR 2002.1.1; SMKGH P.1989-50; MET 21.26.11; TSR 712-GSL; LNS 82G; VAM IS.17-1867





- Name:* BOTTLE
- Region:* Gujarat or Rajasthan
- Date:* 1725 – 75
- Dimensions:* Height: 11.8 cm - Width: 7 cm - Weight: 401.7 g
- Colour:* Translucent greyish colourless; red, pink, pale green, black, beige, yellow, white, dark blue; gold
- Technique:* Mould blown; tooled on the pontil; painted; gilded
- Description:* Rectangular bottle; slight concave base with a diagonal mould mark (indicating a two-part mould) and a small unpolished pontil mark in the center; sloping shoulder extending towards a broken neck; shoulder decorated with a running pattern of polychrome and gilt outlined blossoms and leaves, framed by a triangle and tripartite leaf pattern and solid gilt bands; each side of the body is decorated with a different image or floral motif set against a background of dense gilt foliage, enclosed within a gilt polylobed arch with fine herringbone bands along the edges; two opposing sides are decorated with red and



white floral sprays stemming from a single vegetal tuft; another side depicts a woman dressed in a white and green *lahanga* with yellow *choli* dancing upon a stool as a standing man claps; on the opposing side, a woman sits on a yellow and gold throne chair, with one leg crossed over her knee and her finger pointed towards her mouth; she is dressed in a long blue coat over red *paijamas*, with a strand of bells (flowers) around her neck.

*Condition:* The neck is broken and missing; visible crack seen in the bottom of the base around one corner, extending upwards into a semi-circular shape; slight wear of paint and gilt; numerous seeds and small air bubbles.

*Location:* Tareq Rajab Museum, Kuwait (Acc. No. GSL-712-TSR)

*Published:* *Tareq Rajab Museum* (2013), p. 60

*Related Works:* MAK 13195 A+B; LACMA M.88.129.198; LACMA M.88.129.199; LACMA M.88.129.200; LACMA M.88.129.201; LACMA M.88.129.202; LACMA M.88.129.203; COR 59.1.583; COR 2002.1.1; SMKGH P.1989-50; MET 21.26.11; TSR 711-GSL; LNS 82G; VAM IS.17-1867





- Name:* BOTTLE
- Region:* Gujarat or Rajasthan
- Date:* 1725 - 75
- Dimensions:* Width: 7.0 cm – Height: 11.8 cm – Length: 7.0 cm - Weight: 414.3 g
- Colour:* Translucent greyish colourless; red, pink, pale green, black, beige, yellow, white, dark blue; gold
- Technique:* Mould blown; tooled on the pontil; painted; gilded
- Description:* Rectangular bottle; slight concave base with a diagonal mould mark (indicating a two-part mould) and a small unpolished pontil mark in the center; sloping shoulder extending towards a tall cylindrical neck with a splayed, tooled rim decorated with gold vertical dashes; shoulder decorated with a running pattern of polychrome and gilt outlined blossoms and leaves, framed by a triangle and tripartite leaf pattern and solid gilt bands; each side of the body is decorated with a different image or floral motif set against a background of dense gilt foliage, enclosed within a gilt polylobed arch with fine herringbone bands along the edges; two opposing sides are decorated with eight



red and white floral sprays stemming from a single vegetal tuft; another side depicts a man and woman standing, facing one another, their hands raised in a gesture of offering; she wears a blue and yellow *lahanga* with red *choli*, and he a green *jama* with red striped *patka*; on the opposing side, a lady stands upon a gold stool, with one leg crossed over her knee as she grasps at a hanging branch, while a blackbuck and deer stand by her side; she is dressed in a long red coat and pink *paijamas*, with bells wrapped around her waist.

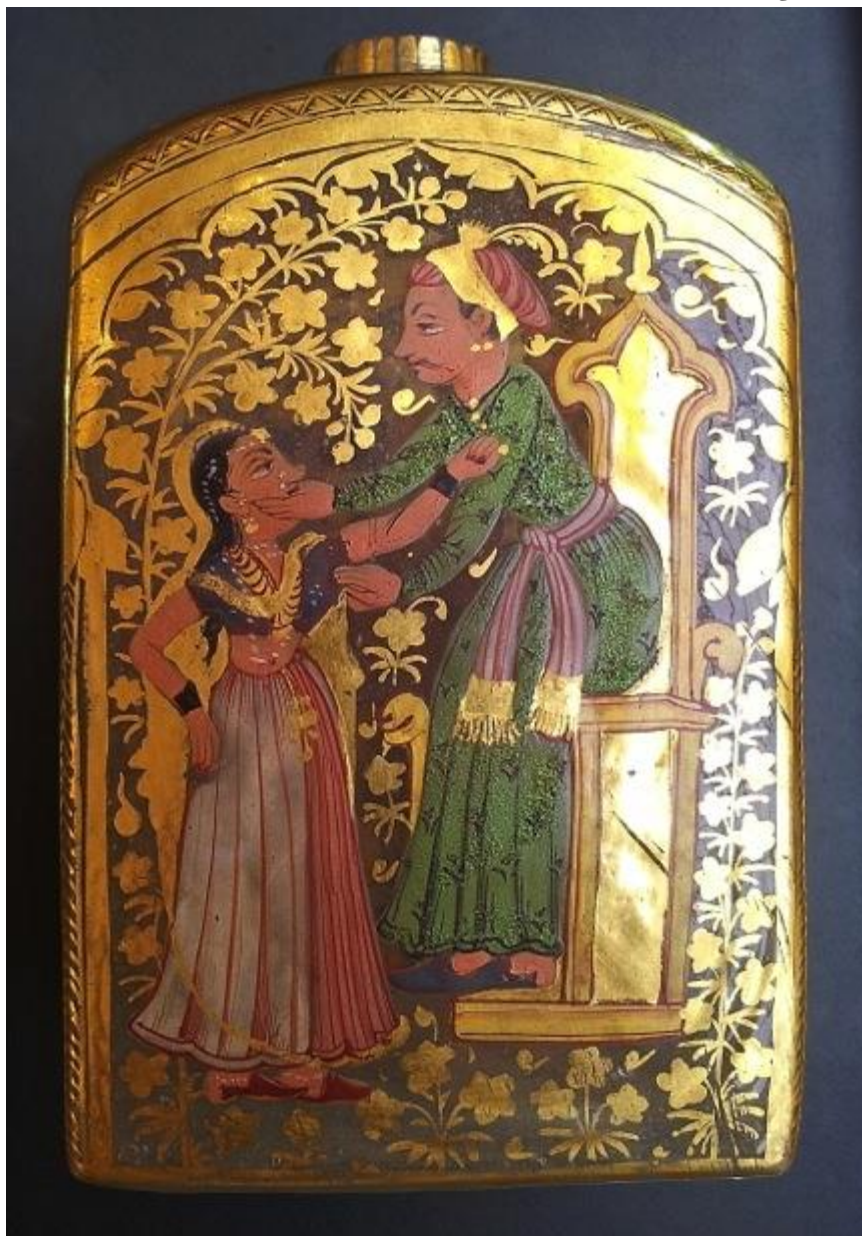
*Condition:* The neck is broken and detached; slight weathering of the surface with a slight milky white film on the interior; some minor wear of gilding; numerous small air bubbles and seeds.

*Location:* Dar al-Athar al-Islamiyyah (al Sabah Collection), Kuwait (Acc. No. LNS 82 G)

*Published:* Carboni 2001, cat. 106 a, p. 388-9

*Related Works:* MAK 13195 A+B; LACMA M.88.129.198; LACMA M.88.129.199; LACMA M.88.129.200; LACMA M.88.129.201; LACMA M.88.129.202; LACMA M.88.129.203; COR 59.1.583; COR 2002.1.1; SMKGH P.1989-50; MET 21.26.11; TSR 711-GSL; VAM IS.17-1867





*Object name:* BOTTLE

*Region:* Gujarat or Rajasthan

*Date:* 1725-75

*Dimensions:* Height: 12 cm

*Colour:* Translucent greyish colourless glass; red, pink, green, black, yellow, white, blue; gold

*Technique:* Mould blown; tooled on the pontil; painted; gilded

*Description:* Rectangular bottle; slight concave base with a diagonal mould mark (indicating a two-part mould) and a small unpolished pontil mark in the center; sloping shoulder extending towards a tall cylindrical neck with a splayed, tooled rim decorated with gold vertical dashes; shoulder decorated with a running pattern of polychrome and gilt outlined blossoms and leaves, framed by a triangle and tripartite leaf pattern and solid gilt bands; each side of the body is decorated with a different image or floral motif set against a background of dense gilt



foliage, enclosed within a gilt polylobed arch with fine herringbone bands along the edges; two opposing sides are decorated with three blue iris sprays stemming from a single vegetal tuft; another side depicts a man standing from his yellow and gold throne chair, his hand clasped around a woman's mouth standing opposite; he is dressed in a long green *jama* with red and gold *patka*, and she in a red *lahanga* and blue *choli*; on the opposing side, a woman sits in a white and gold throne chair tying her hair, with a small white deer by her side.

*Condition:* Neck is broken and missing; numerous seeds and small bubbles.

*Provenance:* Christie's, South Kensington, Oct 2015 (lot 96); Artcurial, Paris, June 2015 (lot 146)

*Related Works:* MAK 13195 A+B; LACMA M.88.129.198; LACMA M.88.129.199; LACMA M.88.129.200; LACMA M.88.129.201; LACMA M.88.129.202; LACMA M.88.129.203; COR 59.1.583; COR 2002.1.1; SMKGH P.1989-50; MET 21.26.11; TSR 711-GSL; TSR 712-GSL; LNS 82G; VAM IS.17-1867





*Object name:* BOTTLE

*Region:* Gujarat or Rajasthan

*Date:* 1725 - 75

*Dimensions:* Height: 17 cm -Width 7 cm (approx.)

*Colour:* Translucent greyish colourless glass; red, blue, yellow, green, white, black; gold

*Technique:* Mould blown; tooled on the pontil; painted; gilded; silver cap added

*Description:* Rectangular bottle; slight concave base with a diagonal mould mark (indicating a two-part mould) and a small unpolished pontil mark in the center; sloping shoulder extending towards a tall cylindrical neck covered in a silver cap; shoulder decorated with a running pattern of polychrome and gilt outlined blossoms and leaves, framed by a triangle and tripartite leaf pattern and solid gilt bands; each side of the body is decorated with a different image or floral motif set against a background of dense gilt foliage, enclosed within a gilt polylobed arch



with fine herringbone bands along the edge; two opposing sides are gold painted with large blue registers (painting unfinished); another side depicts a man dressed in European style clothing, seated on a chair playing a stringed musical instrument (a *vina*) while a darker skinned youth watches; both are dressed in long sleeve blouses with collared rims, small caps and tall pointed boots; on the opposing side, a similarly dressed man sits on a chair with a deer before him. Silver cap (of supposed Indian workmanship) with metal hinge added around the neck, with a Dutch coin soldered to the top.

*Condition:* Object is intact with wear of gild and paint; unfinished decoration.

*Location:* Victoria & Albert Museum, London (Acc. No. IS.17-1867)

*Provenance:* Acquired from the Marryat Collection in 1867.

*Related Works:* MAK 13195 A+B; LACMA M.88.129.198; LACMA M.88.129.199; LACMA M.88.129.200; LACMA M.88.129.201; LACMA M.88.129.202; LACMA M.88.129.203; COR 59.1.583; COR 2002.1.1; SMKGH P.1989-50; MET 21.26.11; TSR 711-GSL; TSR 712-GSL; LNS 82G.





A

B

**Object name:** TWO BOTTLES

**Region:** Gujarat or Rajasthan

**Date:** 1725 - 75

**Dimensions:** Height: 12 cm – Width: 4 cm – Weight: 172.1 g and 175.6 g

**Colour:** Translucent greyish colourless; blue, red, pink, blue, yellow, green black, white; gold

**Technique:** Mould blown; tooled on the pontil; painted; gilded

**Description:** Rectangular bottle; slight concave base with a diagonal mould mark (indicating a two-part mould) and a small unpolished pontil mark in the center; sloping shoulder extending towards a tall cylindrical tooled neck decorated with gold vertical dashes; shoulder decorated with a running pattern of polychrome and gilt outlined blossoms and leaves, framed by a triangle and tripartite leaf pattern and solid gilt bands; each side of the body is decorated with a different image or floral motif set against a background of dense gilt foliage, enclosed within a gilt polylobed arch with fine herringbone bands along the edges.

Bottle A: a woman stands with a small naked boy by her feet; she is dressed in a red striped *lahanga* with a white *choli*, and adorned in

strands of pearls; on the opposing side, a standing woman holds a stringed musical instrument (*vina*) while grasping above at a hanging branch; three yellow and red iris sprays stemming from a single vegetal tuft decorate the remaining two sides.

Bottle B: a woman dressed in a blue and red *lahanga* with yellow *choli* points her finger towards her mouth; she is adorned with jewels and white flowers; on the opposing side, a man sits on a throne chair with his hand pointed towards his mouth; three red roses stemming from a single vegetal tuft decorate the remaining two sides.

*Condition:* Objects are intact with slight wear of paint and gilt; numerous air bubbles seen from the base with slight fogginess.

*Provenance:* Amir Mohtashemi, London; acquired directly from a Private Collection, United Kingdom

*Published:* Amir Mohtashemi, March 2014

*Related Works:* MAK 13195 A+B; LACMA M.88.129.198; LACMA M.88.129.199; LACMA M.88.129.200; LACMA M.88.129.201; LACMA M.88.129.202; LACMA M.88.129.203; COR 59.1.583; COR 2002.1.1; SMKGH P.1989-50; MET 21.26.11; TSR 711-GSL; TSR 712-GSL; LNS 82G; VAM IS.17-1867







*Object Name:* BOTTLE

*Region:* Gujarat or Rajasthan

*Date:* 1725-75

*Dimensions:* Height: 15 cm – Width: 7.8 cm

*Colour:* Translucent greyish colourless; green, blue, white, pink, black; gold

*Technique:* Mould blown; tooled on the pontil; painted; gilded

*Description:* Rectangular bottle; slight concave base with a diagonal mould mark (indicating a two-part mould) and a small unpolished pontil mark in the center; sloping shoulder extending towards a tall cylindrical neck with a splayed, tooled rim decorated with gold vertical dashes; shoulder decorated with a running pattern of polychrome and gilt outlined blossoms and leaves, framed by a triangle and tripartite leaf pattern and solid gilt bands; each side of the body is decorated with floral sprays (roses and small blue flowers) stemming from a single vegetal tuft, enclosed within a gilt polylobed arch with fine herringbone bands along the edges.

*Location:* Corning Museum of Glass, New York (Acc. No. 82.6.10)

*Provenance:* Harcos, Source 1982-07



*Related Works:* MAK 13195 A+B; LACMA M.88.129.198; LACMA M.88.129.199;  
LACMA M.88.129.200; LACMA M.88.129.201; LACMA M.88.129.202;  
LACMA M.88.129.203; COR 59.1.583; COR 2002.1.1; SMKGH P.1989-  
50; MET 21.26.11; TSR 711-GSL; TSR 712-GSL; LNS 82G; VAM IS.17-  
1867





A

B

*Object name:* TWO BOTTLES

*Region:* Gujarat or Rajasthan

*Date:* 1725-75

*Dimensions:* Height: 13.5 cm - Length: 7 cm - Width: 7 cm (approx.)

*Colour:* Translucent greyish colourless; white enamel; red, pink, orange, green, black, yellow, white, blue; gold

*Technique:* Mould blown; tooled on the pontil; appliqué; painted; gilded

*Description:* Rectangular bottle; slight concave base with a diagonal mould mark (indicating a two-part mould) and a small unpolished pontil mark in the center; sloping shoulder with tall cylindrical neck spreading to slightly irregular gilded rim; neck gilt painted with vertical dashes; shoulder decorated with a running pattern of appliqué and gilt painted floral sprays, flanked by solid gilt bands; each side of the body is decorated with a different image yet the same floral motif in appliqué, and either gilt or polychrome painted and enclosed within gilt polylobed arches.

Bottle A: a man wrestles with a standing bear, his arms wrapped around the bear's neck; he wears cropped *paijamas* and a shortened *jama*, with a yellow *patka*, from which a sword and dagger (*katar*) hang; on the opposing side, a leopard with a collar attacks a nilgai antelope, while a yellow deer (wild ass) leaps above. The other sides depict numerous appliqué and gilded flowers stemming from a single vegetal tuft.

Bottle B: a man riding an elephant attacks a tiger, who hangs from the elephant's tusks; on the opposing side, the same rider kneels holding a shield (*dhal*) above his head, as a tiger approaches; he is dressed in a long green *jama* with a *patka*, from which a sword and dagger (*katar*) hang. The other sides depict numerous appliqué and gilded flowers stemming from a single vegetal tuft.

*Condition:* The splayed rim of Bottle A is broken and missing; minor wear of gilt and paint; countless seeds scattered throughout the glass.

*Location:* Museum für Angewandte Kunst, Frankfurt (Acc. No. 13460 A+B)

*Published:* Klesse & Reineking-von Bock, *Glas*, 1973, fig. 102a+b; Frankfurt, 1974, fig. 107-110

*Related Works:* LNS 428 Ga; LNS 428 Gb



A



B





- Name:* BOTTLE
- Region:* Gujarat or Rajasthan
- Date:* 1725-75
- Dimensions:* Width: 7.0 cm – Height: 13.7 cm – Length: 7.0 cm – Weight: 343.8 g
- Colour:* Translucent greyish colourless; white; pink, orange, blue, black, white, yellow; gold
- Technique:* Mould blown; tooled on the pontil; appliqué; painted; gilded
- Description:* Rectangular bottle; slight concave base with a diagonal mould mark (indicating a two-part mould) and a small unpolished pontil mark in the center; shoulder decorated with a running pattern of appliqué and gilt painted floral sprays, flanked by solid gilt bands; each side of the body is decorated with a different image yet the same floral motif in appliqué, and either gilt or polychrome painted and enclosed within gilt polylobed arches; one side depicts a leopard wearing a collar attacking a nilgai antelope, while a yellow deer (wild ass) leaps above;



on the opposing side, a blue bull pierces an attacking tiger, its horns planted firmly in the tigers neck and hind legs.

*Condition:* Broken upper collar of neck with some damage descending down the neck; numerous small air bubbles throughout.

*Location:* Dar al-Athar al-Islamiyyah (al Sabah Collection), Kuwait (Acc. No. LNS 428 Gb)

*Provenance:* Country auction sale, England; Sotheby's London, 25 April 1997 (lot 132)

*Published:* Carboni 2001, cat. 106c, p. 388, 390.

*Related Works:* MAK 13460 A+B; LNS 428 Ga





- Name:* BOTTLE
- Region:* Gujarat or Rajasthan
- Date:* 1725-75
- Dimensions:* Width: 7.0 cm – Height: 14.0 cm – Length: 7.0 cm – Weight: 360.6 g
- Colour:* Translucent greyish colourless; white; green, blue, reddish brown, pink, yellow, red, black; gold
- Technique:* Mould blown; tooled; appliqué; painted; gilded
- Description:* Rectangular bottle; slight concave base with a diagonal mould mark (indicating a two-part mould) and a small unpolished pontil mark in the center; tall cylindrical neck spreading to a splayed and gilded rim painted with gold vertical dashes; shoulder decorated with a running pattern of appliqué and gilt painted floral sprays, flanked by solid gilt bands; each side of the body is decorated with a different image yet the same floral motif in appliqué, and either gilt or polychrome painted and enclosed within gilt polylobed arches; two opposing sides gilt decorated with numerous floral sprays and leaves stemming from

a single vegetal motif; another side depicts an archer on horseback, his bow and arrow raised; he is dressed in a red *jama* with a yellow *patka* and *katar* tucked into it; on the opposing side, a blue bull pierces the legs of an attacking tiger with its horns, blood drawn from its punctures, with small isolated floral sprays against the background.

*Condition:* The object is intact, except for a broken corner at the bottom (on the side depicting the archer); some loss of the white opaque fused relief patterns; minor wear of gilding; numerous small air bubbles throughout. "Microscopic analysis revealed that a new layer of gold may have been recently fired to improve the appearance of the decoration." [Carboni, 2001, p. 388]

*Location:* Dar al-Athar al-Islamiyyah (al Sabah Collection), Kuwait (Acc. No. LNS 428 Ga)

*Glass Composition:* Na<sub>2</sub>O: 0.8; MgO: 0.3; Al<sub>2</sub>O<sub>3</sub>: 0.3; SiO<sub>2</sub>: 55.0; K<sub>2</sub>O: 9.2; CaO: 0.5; MnO: 0.1; Fe<sub>2</sub>O<sub>3</sub>: 0.2; PbO: 33.2

*Provenance:* Country auction England; Sotheby's London, 25 April 1997 (lot 132)

*Published:* Carboni 2001, cat. 106b, p. 388, 390.

*Related Works:* MAK 13460 A+B; LNS 428 Gb







- Name:* BOTTLE
- Region:* Gujarat or Rajasthan
- Date:* 1725-75
- Dimensions:* Height: 15.7 cm – Width: 8.1 cm
- Colour:* Translucent greyish colourless; gold
- Technique:* Mould blown; tooled on the pontil; gilded; brass fixtures added
- Description:* Rectangular bottle; slight concave base with a diagonal mould mark (indicating a two-part mould) and a small abrasive pontil mark in the center; sloping shoulder with a tall cylindrical neck spreading to a splayed rim reinforced by brass fixtures; neck painted with gold vertical dashes; the shoulder decorated with a running pattern of gilded blossoms and leaves, framed by a triangle and tripartite leaf pattern with solid bands, which also decorates the edges of all sides of the bottle; two alternating sides depict a rocky cliff upon which a single domed pavilion sits, with a large tree framing the smaller



domed pavilions and river filled with small boats below; birds perch within the trees. On the opposing sides, a bulbous shaped vase rests on a tray, flanked by large fruit (possibly pineapple) from which floral sprays emerge.

*Condition:* Object is intact with minor wear of gilt; some bubbles and inclusions.

*Location:* Stiftung Museum Kunstpalast Glasmuseum Hentrich, Dusseldorf (Acc. No. P.1985-98)

*Related Works:* Francesca Galloway, London





*Object name:* SIX BOTTLES

*Region:* Gujarat or Rajasthan

*Date:* 1725 - 75

*Dimensions:* Height: 15 cm (including cork) - Weight: 373.3 g; 406.6 g; 443.4 g; 455.9 g; 462.6 g; 499.4 g (including cork)

*Colour:* Translucent greyish colourless glass; gold

*Technique:* Mould blown; tooled on the pontil; gilded; brass finial with cork

*Description:* Rectangular bottle; slight concave base with a diagonal mould mark (indicating a two-part mould) and a small, abrasive pontil mark in center; sloping shoulder extends towards a tall cylindrical neck with a splayed rim decorated with vertical dashes; shoulder decorated with a running pattern of gilded blossoms and leaves, framed below by a fine triangle and tripartite leaf motif; the edges of the bottle are all decorated in solid gild and chevron patterned bands; two alternating sides painted with a rocky cliff upon which a single domed pavilion sits, with a large tree framing three smaller domed pavilions and driver with three boats below; small birds perch on the turreted pavilions and in the tree; on the opposing sides, a bulbous shaped vase with two curved handles rests on a tray, flanked by large fruit (possibly pineapple) from which floral sprays emerge.

*Condition:* One bottle damaged and restored; some gilt missing at parts.

*Provenance:* Francesca Galloway, London; Christie's London, Oct 2008 (lot 230)

*Related Works:* SMKGH P.1985-98.







*Object Name:* BOTTLE

*Region:* Gujarat or Rajasthan

*Date:* 1725-75

*Dimensions:* Height: 14 cm – Base width: 6.5 cm – Weight: 183 g

*Colour:* Translucent cobalt blue glass; pink, yellow, red, light and dark green, white; light blue; gold

*Technique:* Mould blown; tooled on the pontil; painted; gilded

*Description:* Rectangular bottle; slight concave base with a diagonal mould mark (indicating a two-part mould) and a small unpolished pontil mark in the center; sloping shoulder, short cylindrical neck covered with silver top; shoulder decorated with a running pattern of polychrome blossoms and leaves, framed below by a fine triangle and tripartite leaf motif; each side of the bottle is enclosed within a pink polylobed arch, decorated with small floral arabesques and diagonal red dashes; two opposing sides painted with three floral sprays (marigolds and lilies) stemming from a single vegetal tuft; another side depicts an emaciated Majnun seated cross-legged against a rocky mound, dressed in only a loincloth; he holds an open book of poetry and prayer beads; a green bird perches on his head and on the rocks while a small white dog with a collar kneels by his feet; on the opposing side, Layla kneels on a red carpet, against a yellow striped bolster, raising her hand towards her mouth; she is dressed in a green dress with



waist coat and square cap; small gilt flowers decorate the background; silver cap added posteriorly, decorated with a ship and the inscription 'Vigilate deo Confidentes' on the surface and a lion with crown on the interior.

*Condition:* The object is intact with some minor wear of paint and gilt

*Location:* Victoria & Albert Museum, London (Acc. No. 14.1867)

*Provenance:* Acquired from the Marryat Collection in 1867

*Published:* Dikshit 1969, plate XXXIII (left), XXXIV.A, C, D, p. 106-7; Stronge 1982; Liefkes 1997, no. 134

*Related Works:* COR 62.1.6; BM SLMisc.341; VAM 1891A-1855; VAM 15.1867; LACMA M.88.129.204





*Object Name:* BOTTLE

*Region:* Gujarat or Rajasthan

*Date:* 1725-75

*Dimensions:* Height: 14 cm – Width: 6.5 cm – Weight: 295.1 g

*Colour:* Translucent cobalt blue glass; pink, yellow, red, green, white; blue; gold

*Technique:* Mould blown; tooled on the pontil; painted; gilded

*Description:* Rectangular bottle; slight concave base with a diagonal mould mark (indicating a two-part mould) and a small unpolished pontil mark in the center; sloping shoulder, short cylindrical neck covered with silver top; shoulder decorated with a running pattern of polychrome blossoms and leaves, framed below by a fine triangle and tripartite leaf motif; each side of the bottle is enclosed within a pink polylobed arch, decorated with small floral arabesques and diagonal red dashes; two opposing sides painted with three floral sprays (marigolds and lilies) stemming from a single vegetal tuft; one side depicts a seated sage or ascetic dressed in red pants and a yellow *patka*, with beads around his neck; his hair is tied upon his head, and his long nails are turned inwards towards his chest; he leans against a large stripped bolster; on the opposing side, a woman stands carrying a fly whisk and *pandan* box upon a tray; she is dressed in a green and red *lahanga* with a striped shawl across her shoulders; small gilt flowers decorate the background; silver cap added posteriorly, decorated with a ship and the inscription 'Vigilate deo Confidentes' on the surface and a lion with crown on the interior.

*Condition:* Base of the bottle broken and restored; darkened marks present at the four corners with visible restoration marks seen from the interior of the base; seeds and bubbles scattered throughout the glass.

*Location:* Victoria & Albert Museum, London (Acc. No. 15-1867)

*Provenance:* Acquired by the Museum in 1867

*Related Works:* COR 62.1.6; BM SLMisc.341; VAM 1891A-1855; VAM 14.1867; LACMA M.88.129.204.







*Object Name:* BOTTLE

*Region:* Gujarat or Rajasthan

*Date:* 1725-75

*Dimensions:* Height: 14 cm – Width: 6.5 cm

*Colour:* Opalescent light green glass; pink, yellow, red, green, white; blue; gold

*Technique:* Mould blown; tooled on the pontil; painted; gilded.

*Description:* Rectangular bottle; slight concave base with a diagonal mould mark (indicating a two-part mould) and a small unpolished pontil mark in the center; sloping shoulder, short cylindrical neck covered with silver top; shoulder decorated with a running pattern of polychrome blossoms and leaves, framed below by a fine triangle and tripartite leaf motif; each side of the bottle is enclosed within a yellow polylobed arch, decorated along the edges with small blue flowers and vertical circles; two opposing sides painted with three red floral sprays



stemming from a single vegetal tuft; on the opposing side a woman stands holding a floral branch dressed in a long striped coat with large golden bangles; her long hair decorated with gold chains; small gilt flowers decorate the background; silver cap added, imprinted with a ship and the inscription 'Vigilate deo Confidentes' on the surface and a lion with crown on the interior.

*Condition:* Object is intact with minor wear of gilt and paint.

*Location:* Victoria & Albert Museum, London (Acc. No. 16-1867)

*Provenance:* Acquired from the Marryat Collection in 1867

*Related works:* VAM 14.1867; VAM 15-1867; VAM 17.1867; LACMA M.88.129.204



*Object Name:* BOTTLE

*Region:* probably Lucknow

*Date:* 1725-50

*Dimensions:* Height: 13 cm – Width of base: 7.8 cm – Width of opening: 1.4 cm – Weight: 314.8 g

*Colour:* Translucent cobalt blue; white; yellow; green; red, pink; gold

*Technique:* Mould blown; tooled on the pontil; painted; gilded

*Description:* Rectangular bottle; slight concave base with a diagonal mould mark (indicating a two-part mould) and a small unpolished pontil mark in the center; sloping shoulder extending to a short cylindrical neck with a broken rim; shoulder decorated with a running pattern of polychrome blossoms and leaves, with a fine gilt triangular and tripartite leaf band circling the bottom neck; edges of each side painted with a pink band decorated with red diagonal dashes, flanked

by fine solid gilt bands; two opposing sides decorated with eight white floral sprays accented in red with golden stems, two other opposing sides decorated with polychrome floral sprays, blossoms, and leaves emerging from golden stems; a green parrot perches on a branch.

*Condition:* Object is intact and in good condition; top of neck is broken; minor wear of gilt.

*Location:* British Museum, London (Acc. No. SLMisc.341)

*Provenance:* Bequeathed by Sir Hans Sloane to the BM in 1753.

*Published:* Tait 2012, no. 76, p. 139

*Related Works:* COR 62.1.6; VAM 14.1867; VAM 15.1867; VAM 1891A-1855; LACMA M.88.129.204





*Object name:* BOTTLE

*Region:* Delhi or Lucknow

*Date:* 1750-75

*Dimensions:* Height: 13.7 cm – Width: 6.6 cm

*Colour:* Translucent cobalt blue; white, pink, red, green, blue; gold

*Technique:* Mould blown; tooled on the pontil; appliqué; enameled; gilded

*Description:* Rectangular bottle; slight concave base with a diagonal mould mark (indicating a two-part mould) at base with a small abrasive pontil mark in center; square shoulders with a small cylindrical neck that terminates in a rounded, uneven rim painted in gold vertical dashes; upper shoulder decorated with twenty inverted stylised leaves painted in the reverse-gilt technique, each painted with a small floral spray inside; encircling directly below the neck is a fine pink floral scroll painted against a green background, with a thin gilded chevron band, which also runs along the edges and sides of the bottle; each side is painted with large appliqué and polychrome painted floral sprays framed within a green and gold polylobed arch; on two opposing sides six white and yellow flowers emerge from a single vegetal tuft; on the other, three pink irises.

*Condition:* The object is intact and in excellent condition, with minor wear of gilt and appliqué.

*Location:* Victoria & Albert Museum, London (Acc. No. 1891A-1855)



*Provenance:* Purchased from the Bernal Collection by the Museum in 1891

*Published:* Stronge 1982, cat, 395, p. 126

*Related Works:* COR 62.1.6; BM SLMisc.341; VAM 14-1867; VAM 15.1867; LACMA M.88.129.204





- Object name:* BOTTLE
- Region:* probably Lucknow
- Date:* 1725 – 50 (cap: Europe, 19<sup>th</sup> century)
- Dimensions:* Height: 13.97 cm – Length: 5.72 cm – Width: 5.56 cm
- Colour:* Translucent cobalt blue; white, yellow, green, red, pink; gold
- Technique:* Mould blown; tooled on the pontil; painted; gilded
- Description:* Rectangular bottle; slight concave base with a diagonal mould mark (indicating a two-part mould) and a small unpolished pontil mark in the center; sloping shoulder, short cylindrical neck entirely covered with a silver 19<sup>th</sup> century European cap; shoulder decorated with a running pattern of polychrome blossoms and leaves, with a fine triangle and tripartite leaf band circling the bottom neck (largely worn); edges of the walls painted in pink with red diagonal dashes and fine solid gilt bands; both opposing sides decorated with nine pink, white and yellow sprays, their veins detailed in red, stemming from gold vines.
- Condition:* Object is intact with silver cap added later; wear of gilt around upper shoulder.
- Location:* Los Angeles County Museum of Art (Acc. No. M.88.129.204)
- Credit Line:* Gift of Varya and Hans Cohn
- Related Works:* COR 62.1.6; VAM 14.1867; VAM 15.1867; VAM 1891A-1855; BM SLMisc.341



*Object Name:* BOTTLE

*Region:* probably Lucknow

*Date:* 1725-75

*Dimensions:* Height: 14.6 cm – Width: 7 cm

*Colour:* Translucent cobalt blue glass; gold

*Technique:* Mould blown; tooled on the pontil; gilded

*Description:* Rectangular bottle; slight concave base with a diagonal mould mark (indicating a two-part mould) and a small unpolished pontil mark in the center; sloping shoulder, short cylindrical neck tooled to a rounded rim; neck painted with vertical dashes; shoulder decorated with a running scroll of alternate blossoms and leaves; edges of the bottle decorated in a fine triangle and tripartite motif flanked by finer solid gilt bands; opposing sides painted with diverse floral sprays organized within a symmetrical composition, with small birds perched upon vines and leaves in the corners and edges.

*Condition:* Excellent condition with minor wear of gilt.

*Location:* Corning Museum of Glass, New York (Acc. No. 62.1.6)

*Provenance:* Carlebach Gallery, Source 1962

*Related Works:* LACMA M.88.129.204; BM SLMisc.341; BMA





*Object Name:* BOTTLE

*Region:* Lucknow (or possibly Bengal)

*Date:* 1725-50

*Dimensions:* Height: 18 cm

*Colour:* Translucent cobalt blue glass; gold

*Technique:* Mould blown; tooled on the pontil; gilded

*Description:* Square shaped; slight concave base with a diagonal mould mark at the base (indicating a two-part mould) and an abrasive pontil mark in the center; rounded shoulders extending towards a small cylindrical neck terminating in an uneven rim painted with gold vertical dashes; upper shoulder decorated with a running pattern of gold blossoms and leaves; the edges of the bottle are outlined in a fine triangle and tripartite leaf pattern; each side of the bottle is painted with a bulbous shaped vase with two curved handles, from which an array of diverse floral sprays and leaves emerge, standing upon a tray flanked by large



fruit (possibly pineapple). In the bulbous vases is an inscribed horse's head in profile placed upon a crown, the Crest of John Deane, Colonial administrator to the English East India Company and President of Bengal from Jan 1723-Jan 1726 and Sept 1728-Feb 1732.

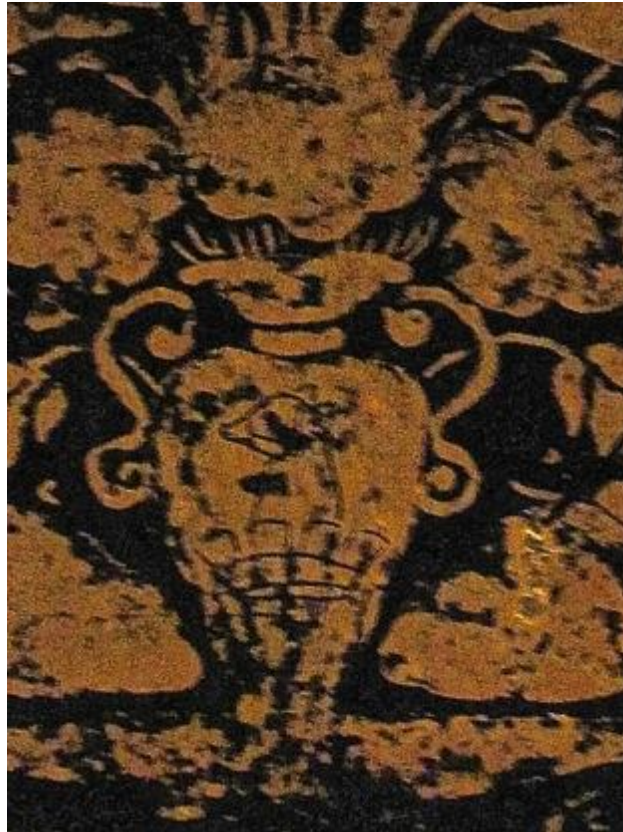
*Condition:* Object is intact with some minor wear of gilt; seeds scattered throughout the glass, with several dark inclusions.

*Location:* Victoria & Albert Museum, London (Acc. No. C.143-1936)

*Provenance:* Given by Mrs. Buckley in memory of her husband, Wilfred, in 1936

*Published:* Liefkes, ed., *Glass*, p. 105; Stronge 1982, cat. 397, p. 126.

*Related Works:* LACMA M.88.124-c; VAM C.140-1936





*Object name:* TWO BOTTLES

*Region:* Northern India

*Date:* 1750-75

*Dimensions:* Height: 12.7 cm

*Colour:* Transparent blue glass; gold; silver; white

*Technique:* Mould blown; tooled on the pontil; gilded; painted

*Description:* Rectangular shaped; slight concave base with a diagonal mould mark (indicating a two-part mould) and a small abrasive pontil mark in the center; sloping rounded shoulders rising through a bulbous gilded knob to a tall cylindrical neck drawn out to a small, uneven gilded mouth; neck painted with fine white vegetal sprays running (iris and cypress or fern leaves); all edges outlined with solid silver circles, flanked by fine gilt bands; shoulder painted with fine floral sprays with gold centers; bottle A decorated on four sides with white iris

sprays stemming from a single vegetal tuft; bottle B painted with white drooping lilies.

*Condition:* Both objects are intact with minor wear of paint and gild; silver has tarnished; bottle A cracked in the bottom corner; chill marks at the base with seeds scattered throughout the glass.

*Location:* Staatliche Museen zu Berlin, Pergamonmuseum, Berlin (Acc. No. J.1/75a+b)

*Related Works:* LACMA M.88.124-C; VAM C.143-1936; MET 1975.194.1; MET 1975.64







- Object name:* BOTTLE
- Region:* Northern India
- Date:* 1775-1825
- Dimensions:* Height: 14.5 cm – Width of base: 5.1 cm
- Colour:* Translucent dark green glass; silver; gold
- Technique:* Mould blown; tooled on the pontil; painted; gilded
- Description:* Rectangular shaped; body molded with honeycomb and leaf patterning in slight relief; slight concave base with a diagonal mould mark (indicating a two-part mould) and a small unpolished pontil mark in the center; sloping shoulders rising through a bulbous knob and a tall cylindrical neck drawn out to a small uneven gilded mouth;



neck silver painted with two stylised leaves and gilt painted bulbous bottom; upper shoulder silver painted with a running floral scroll, with a solid gilt and chequered band decorating the edges; four sides moulded with a large isolated leaf outlined in silver, framed within a silver and gold polylobed arch.

*Condition:* Object is intact with minor wear of gilt; silver strongly tarnished

*Location:* Metropolitan Museum of Art, New York (Acc. No. 1975.64)

*Credit Line:* Fletcher Fund, 1975

*Provenance:* Saeed Motamed, Frankfurt, until 1975; sold to MMA

*Published:* Jenkins-Madina, Marilyn. "Islamic Glass: A Brief History." *Metropolitan Museum of Art Bulletin* vol. 44, no. 2 (Fall 1986). p. 48, ill. fig. 53 (color)

*Related Works:* MET 1975.194.1; SMB J.1/75a+b; Christie's South Kensington June 2014 (lot 39); Bonhams London, 8 Oct 2009 (lot 363)





- Object name:* BOTTLE  
*Region:* Northern India  
*Date:* 1775-1825  
*Dimensions:* Height: 14 cm – Width of base: 5.7 cm – Weight: 73.8 g  
*Colour:* Translucent greyish colourless glass; light and dark blue, green, white; gold  
*Technique:* Mould blown; tooled on the pontil; painted; gilded  
*Description:* Rounded hexagonal shaped body; moulded with honeycomb, vertical curving panels and cartouches in subtle relief; slight concave base with a diagonal mould mark (indicating a two-part mould) and a small unpolished pontil mark in the center; sloping rounded shoulders rise to a bulbous knob with a tall cylindrical neck drawn out to a small uneven gilded mouth; neck gilded and painted with two horizontal rows of white and green flowers; body decorated with isolated light blue floral sprays within elongated cartouches alternated with curved panels of white vertical dots, all gilt outlined.  
*Condition:* Object is intact with slight wear to gilt and enameling.  
*Location:* Metropolitan Museum of Art, New York (Acc. No. 1975.194.1)  
*Credit Line:* Fletcher Fund, 1975  
*Provenance:* Saeed Motamed, Frankfurt, until 1975; sold to MMA  
*Published:* Jenkins-Madina, Marilyn. "Islamic Glass: A Brief History." *Metropolitan Museum of Art Bulletin* vol. 44, no. 2 (Fall 1986). p. 48, ill. fig. 54 (color)  
*Related Works:* MET 1975.64; SMB J.1/75a+b; Christie's South Kensington June 2014 (lot 39)



*Object Name:* BOTTLE

*Region:* Northern India

*Date:* 1800-50

*Dimensions:* Height: 15 cm (approx.) – Width of base: 12 cm (approx.)

*Colour:* Translucent dark blue glass; gold

*Technique:* Free blown; tooled on the pontil; gilded

*Description:* Bell shaped; sloping rounded shoulders rising through a bulbous knob and a tall cylindrical neck drawn out to a small, uneven gilded mouth; upper neck and body gilt decorated with isolated plants, comprising five leaves; five plants circle the upper neck, flanked by fine solid gilt bands; body decorated with similar plants within three rows of latticework patterning; upper shoulder painted with rows of geometric swirls; body curves out to a concave base with unpolished pontil mark in center.

*Condition:* Object is intact with minor wear of gilt; small bubbles and seeds.

*Location:* Bharat Kala Bhavan, Varanasi Showcase 7, No. 18

*Related Works:* MET 1975.64; MET 1975.194.1; SMB J.1/75a+b; Christie's South Kensington June 2014 (lot 39)



- Object name:* BOTTLE  
*Region:* Gujarat or Rajasthan  
*Date:* 1725-75  
*Dimensions:* Height: 11.2 cm – Width of base: 4.8 cm – Weight: 73.5 g  
*Colour:* Transparent light green glass; gold  
*Technique:* Mould blown; tooled on the pontil; rim added; gilded  
*Description:* Hexagonal shaped body; uneven concave base with large unpolished pontil mark in center; sloping rounded shoulders rising to a cylindrical neck with a rounded uneven rim; neck and body gilt painted with vertical rows of stylised flowers and leaves, with two opposing sides decorated with three vertical diamonds.  
*Condition:* Object is intact with gilt strongly tarnished and worn at parts; chill marks at base; seeds.  
*Location:* Metropolitan Museum of Art, New York (Acc. No. 21.26.10)  
*Credit Line:* Rogers Fund, 1921  
*Provenance:* Hagop Kevorkian, New York, until 1921; his sale, Anderson Galleries, New York, January 26–29, 1921  
*Related Works:* *Decoration:* LTS1985.1.290.1





*Object Name:* UNGUENT JAR

*Region:* Patna, Bihar

*Date:* 1800-50

*Dimensions:* Height: 6.4 cm – Maximum width: 3.8 cm

*Colour:* Translucent greyish colourless glass; gold

*Technique:* Free blown; tooled on the pontil; gilded

*Description:* Rounded cylindrical shaped body with sloping shoulders rising up to a short cylindrical neck that flares to a splayed tooled rim; neck and body gilt painted with a row of vertical stylised plants, each painted with numerous fine leaves; fine solid gilt bands circle the upper and lower neck, with a row of solid gilt squares; body flares out slightly to a concave base with slight kicked-in base; small unpolished pontil mark in center.

*Condition:* Object is intact with minor wear of gilt; slight milky film; seeds.

*Location:* Bharat Kala Bhavan, Varanasi (Acc. No. 9510)

*Published:* Dikshit, plate XXIV.B (right), p. 99

*Related Works:* *Decoration:* COR.75.6.15; SMB J.1/75a+b; SMKGH P.1985-9



*Object name:* FOUR SMALL BOTTLES

*Region:* Northern India

*Date:* 1775-1800

*Dimensions:* Height: 6.5 – 6.6 cm – Width: 3.1-3.4 cm

*Colour:* Translucent greyish colourless glass; gold

*Technique:* Mould blown; tooled on the pontil; appliqué; gilded; metal repousse and cork tops added

*Description:* Four small rectangular bottles; slight concave base with a diagonal mould mark (indicating a two-part mould) and a small unpolished pontil mark in the center; sloping shoulders rising to short cylindrical necks, gilt painted with vertical lines; upper shoulder decorated with running floral scrolls framed within fine solid gilt bands; each of the four sides is appliqué and gilt painted with identical isolated floral sprays (eight petals) stemming from a single stem. Repousse metal top in the shape of an eight-petal flower.

*Condition:* All four objects are intact with minor wear of gilt; seeds; and chill marks seen around the base; minor dark inclusions.

*Location:* Staatliche Museen zu Berlin, Pergamonmuseum, Berlin (Acc. No. I.3/72 a, b, c, d)

*Provenance:* The Madina Collection of Islamic Art, gift of Camilla Chandler Frost

*Related Works:* COR 66.1.9A; COR 66.1.9B; MET 1975.194.2; BKB 9193; LNS 428 GB; LNS 428 GA



- Object name:* BOTTLE WITH GILDED FLOWERS
- Region:* Northern India
- Date:* 1775-1800
- Dimensions:* Height: 6.3 cm – Width of base: 2.8 cm – Weight: 50.3 g
- Colour:* Translucent aubergine glass; gold
- Technique:* Mould blown and drawn; tooled on the pontil; gilded
- Description:* Small rectangular shape; slight concave base with a diagonal mould mark (indicating a two-part mould) and a small unpolished pontil mark in the center; sloping shoulders rising to a cylindrical uneven neck with strong tooling marks; neck gilt painted with vertical lines, upper shoulder decorated with a running floral scroll; four sides of body gilt painted with an isolated floral spray within a polylobed arch.
- Condition:* Object is intact with small damage (missing glass) at bottom corner, with visible crack extending along the rim to opposing corner; slight wear in gilt.
- Location:* Metropolitan Museum of Art, New York (Acc. No. 1975.194.2)
- Credit Line:* Fletcher Fund, 1975
- Provenance:* Saeed Motamed, Frankfurt, until 1975; sold to MMA
- Published:* Jenkins-Madina, Marilyn. "Islamic Glass: A Brief History." *Metropolitan Museum of Art Bulletin* vol. 44, no. 2 (Fall 1986). p. 48, ill. fig. 52
- Related Works:* COR 66.1.9A; COR 66.1.9B; LACMA, M.2002.1.488a; LACMA M.2002.1.488b



- Object name:* BOTTLE
- Region:* Northern India
- Date:* 1775-1800
- Dimensions:* Height: 5.9 cm – Length: 3.3 cm – Width: 3.3 cm – Total weight: 98.5g
- Colour:* Translucent cobalt blue glass; gold
- Technique:* Mould blown and drawn; tooled on the pontil; gilded
- Description:* Small rectangular bottles; slight concave base with a diagonal mould mark (indicating a two-part mould) and a small unpolished pontil mark in the center; sloping shoulders rising to tall cylindrical, uneven tooled necks; neck gilt painted with vertical lines; upper shoulder decorated with running floral scrolls framed within fine solid gilt bands; each of the four sides gilt painted with identical isolated floral sprays stemming from a single vegetal tuft, framed within a polylobed foliate medallion.
- Condition:* Both objects are intact with minor wear of gilt; seeds; minor dark inclusions.
- Location:* Los Angeles County Museum of Art (Acc. No. M.2002.1.488a + b)
- Credit Line:* The Madina Collection of Islamic Art, gift of Camilla Chandler Frost
- Related Works:* COR 66.1.9A; COR 66.1.9B; MET 1975.194.2; BKB 9193





*Object Name:* SMALL BOTTLE

*Region:* Northern India

*Date:* 1800-50

*Dimensions:* Height: 5.7 cm – Width: 2.9 cm

*Colour:* Translucent dark blue glass; gold

*Technique:* Mould blown; tooled on the pontil; gilded

*Description:* Rectangular bottle; slight concave base with a diagonal mould mark (indicating a two-part mould) and a small unpolished pontil mark in the center; sloping shoulder, short cylindrical neck tooled to a rounded rim; decorated on each side with an isolated floral spray, with a vegetal scroll running around the shoulder; edges painted in gold, with isolated leaves around the neck.

*Condition:* Object is intact with considerable wear of gilt.

*Location:* Corning Museum of Glass, New York (Acc. No. 66.1.9A)

*Provenance:* Boney, Alice, Source 1966-01-19

*Related Works:* MET 1975.194.2; COR 66.1.9B; BKB 9195; SMB I.3/72a&b; LACMA M.2002.1.488a+b



*Object Name:* SMALL BOTTLE

*Region:* Northern India

*Date:* 1800-50

*Dimensions:* Height: 5.7 cm – Width: 2.9 cm

*Colour:* Opacified yellow glass; gold

*Technique:* Mould blown; tooled on the pontil; gilded

*Description:* Rectangular bottle; slight concave base with a diagonal mould mark (indicating a two-part mould) and a small unpolished pontil mark in the center; sloping shoulder, short cylindrical neck tooled to a rounded rim; decorated on each side with an isolated floral spray, with a vegetal scroll running around the shoulder; edges painted in gold, with isolated leaves around the neck.

*Condition:* Object is intact with considerable wear of gilt.

*Location:* Corning Museum of Glass, New York (Acc. No. 66.1.9B)

*Provenance:* Boney, Alice, Source 1966-01-19

*Related Works:* MET 1975.194.2; COR 66.1.9A; BKB 9195; SMB I.3/72a&b; LACMA M.1.48a+b



*Object Name:* SMALL BOTTLE

*Region:* Northern India

*Date:* 1800-50

*Dimensions:* Height: 5.1 cm

*Colour:* Opacified yellow glass; pink, green, blue, white; gold

*Technique:* Mould blown; tooled on the pontil; painted; gilded

*Description:* Small rectangular bottle; slight concave base with a diagonal mould mark (indicating a two-part mould) and a small unpolished pontil mark in the center; sloping shoulders rising to cylindrical neck that flares to a rounded tooled rim; two fine horizontal gilt lines circle the neck; all edges are gilt outlined; upper shoulder painted with a running scroll of alternating red sprays and green leaves; each side painted with an isolated blue and white iris spray stemming from a single vegetal tuft.

*Condition:* Object is intact with minor wear of gilt and paint.

*Location:* Bharat Kala Bhavan, Varanasi (Acc. No. 9195)

*Published:* Dikshit, Plate XXIV.A (left), pp. 101-2.

*Related Works:* COR 66.1.9A+B; LACMA M.2002.1.48A+B; MET 1975.194.2





- Object Name:* SMALL JAR  
*Region:* Northern India  
*Dating:* 1800-50  
*Dimensions:* Height: 4 cm (approx.)  
*Colour:* Opacified yellow glass; pink, red, green, greyish blue, white; gold  
*Technique:* Free blown; tooled on the pontil; painted; gilded  
*Description:* Rounded bowl shaped with a short cylindrical collar that flares to a rounded gilded rim; inner rim gilt painted with band of stylised inverted leaves; neck painted with isolated red and pink petals with short stems outlined in gold; upper shoulder and base decorated with a fine vegetal scroll in light and dark green, flanked by solid gilt bands and a row of circles; body painted with a running floral motif, alternating between red and pink sprays with grey-blue iris buds; body narrows to a flattened base with small pontil mark.
- Condition:* Intact with minor wear of gilt and paint; minor dark inclusions.  
*Location:* Bharat Kala Bhavan, Varanasi (Acc. No. 9193)  
*Published:* Dikshit, Plate XXIV.A (right), pp. 100.  
*Related Works:* *Colour:* JKMM; BKB 9195; Christie's South Kensington, 12 June 2014 (lot 41)





- Name:* SMALL PERFUME BOTTLE (FLASK POSSIBLY FOR SNUFF)
- Region:* Chinese made; decorated in Northern India
- Date:* 1800-50
- Dimensions:* Height: 3.9 cm – Width: 4.3 cm – Length: 1.7 cm – Weight: 25.3 g
- Colour:* Translucent light green glass with opacified green outer layer; blue, orange, light yellow; gold
- Technique:* Flashed glass; mould blown; wheel-cut; painted; gilded
- Description:* Circular flattened body with a small flat base, and faceted shorter sides with incising double grooved lines; both flattened sides are painted with black floral sprays outlined in gold, and enclosed within four red and gold polylobed medallions.
- Condition:* Object is intact with the neck missing; wear of gilt and tarnishing.
- Location:* Dar al-Athar al-Islamiyyah (al Sabah Collection), Kuwait (Acc. No. LNS 283 G)
- Provenance:* Reportedly from Kashmir
- Published:* Carboni 2001, cat. 108A, p. 394-5
- Related Works:* COR 74.6.2; MET 1987.158 (after JGS, 30, 1988, p. 105, no. 10)



*Object Name:* PERFUME BOTTLE

*Region:* Northern India

*Date:* 1775-1800

*Dimensions:* Height: 8.6 cm – Maximum width: 7 cm – Weight: 68 g

*Colour:* Translucent cobalt blue glass; gold

*Technique:* Mould blown; handles added; gilded

*Description:* Circular mould shaped body with short bulbous neck; fine curved handles added; both sides moulded in deep relief with a sixteen-petal floral spray, petals outlined in gilt, and a fine band of circular hollows encircling the bulb and exterior; narrow sides gilt decorated with running vine and creeper motif; unpolished pontil mark at base, with strong breakage mark of missing pedestal.

*Condition:* Upper neck damaged, presenting an uneven rim; pedestal missing; strong wear of gilt

*Location:* Victoria & Albert Museum, London (Acc. No. 895.1889)

*Provenance:* Acquired in 1889

*Related Works:* SMKGH P.1981-298; BKB 9098; Amir Mohtashemi, London



- Name:* PERFUME BOTTLE  
*Region:* Northern India  
*Date:* 1775-1800  
*Dimensions:* Height: 12.7 cm – Width: 7.7 cm  
*Colour:* Translucent greyish colourless glass; red; green; blue; black; gold  
*Technique:* Mould blown; painted; gilded; pedestal and handles added  
*Description:* Circular mould shaped body with a bulbous knob extending towards a tall cylindrical neck, tooled with an uneven rim; two curved handles pressed in subtle relief pattern on each side of the body; a red floral spray encircled by eight green petals decorates the center of each side,



from which eighteen gilt outlined rays radiate; small isolated green leaves decorate the upper neck and sides, with an isolated red flower on the bulbous knob; around the pedestal, fine floral dots in white and blue, with a solid green and gold band around the edge; small abrasive pontil mark in the center beneath the pedestal.

*Condition:* Object is intact with minor wear of gilt and paint; numerous seeds; minor dark inclusions.

*Location:* Stiftung Museum Kunstpalast Glasmuseum Hentrich, Dusseldorf (Acc. No. P.1981-298)

*Provenance:* Acquired by the museum in 1981.

*Published:* Ricke, *Neue Glaser*, 1985, S.53, Abb. 13; Ricke 1989, cat. 203

*Related Works:* BKB 9098; VAM 895.1889; Amir Mohtashemi, London







*Object name:* ROSEWATER SPRINKLER or PERFUME BOTTLE

*Region:* Delhi or Awadh

*Date:* 1750-1800

*Dimensions:* Height: 15 cm – Weight: 112.5 g

*Colour:* Translucent emerald green glass; gold

*Technique:* Mould blown; tooled on the pontil; gilded

*Description:* Flat, circular shaped body, moulded in the form of a twelve-leaf spray; central pattern moulded in a similar twelve-petal spray around an eight-petal flower; bulbous knob extends towards a tall cylindrical neck with a tooled rim, decorated in the reverse gilt technique with

two three-petal flowers on the bulbous portion and a band of stylised leaves at the top; four small four-petal flowers in the reverse gilt technique decorates each of the side niches; splayed pedestal base added and painted with a fine gilded rim; roughed pontil mark in the center.

*Condition:* Shock to upper corner of shoulder with visible crack in glass and retouching of gilt; strong watermarks; minor wear of gilt; base replaced with resin one; numerous small air bubbles.

*Provenance:* Amir Mohtashemi, London; Christie's, South Kensington, June 2013 (lot 241); Bonham's London, April 2004 (lot 470)

*Published:* Amir Mohtashemi, March 2014

*Related Works:* *Shape:* SMKGH P.1981-298; BKB 9098; VAM 895.1889

*Decoration:* BM OA.1961.10-16.1; LNS 73 G; DC 10.2010; SJM 142; JKMM 76.1475





*Object name:* PERFUME BOTTLE

*Region:* Northern India

*Date:* 1750-1800

*Dimensions:* Height: 14.6 cm – Width of base: 4.8 cm – Widest width: 5.5 cm

*Colour:* Translucent greyish colourless glass; blue; black; gold

*Technique:* Free blown; tooled on the pontil; handles and base added; painted; gilded

*Description:* Elongated oval shaped; with a bulbous knob extending towards a tall cylindrical neck, tooled with an uneven rim; neck gilded with a band of stylised vertical leaves joined by arabesques punctuated by small central dots, flanked by solid gilt bands; bulbous neck and body

painted with isolated gilt peacock feathers enclosed within rows of latticework; upper shoulder decorated with band of inverted gilt leaves and small dots; body narrows towards its base, with a circular and slightly hollowed pedestal added, painted with a row of stylised gilt leaves; curved handles added and moulded in a subtle relief pattern; small unpolished pontil mark in center.

*Condition:* Large portions of body and neck darkened internally by a black fragrant substance; broken handle; reddish dirt around the base; minor wear of gilt; seeds and small dark inclusions.

*Location:* Maharaja Sawai Man Singh II Museum, Jaipur (Acc. No. G.11)

*Provenance:* Donated by H.H. Rajmata Padmini Devi of Jaipur, 1974

*Related Works:* *Decoration:* LNS 10G; Artcurial Paris, December 2015 (lot 49); BKB 7, no. 18







*Object name:* PERFUME BOTTLE

*Region:* Northern India

*Date:* 1775-1800

*Dimensions:* Height: 13 cm – Weight: 43.2 g

*Colour:* Translucent greyish colourless glass; blue, green; gold

*Technique:* Mould blown and drawn; gilded; painted

*Description:* Grenade shaped; mould blown with a bulbous knob extending towards a tall cylindrical neck, tooled with an uneven rim; upper neck painted with a band of vertical leaves accented with dark green and gilt outlined; a row of dark blue leaves encircles the bulbous knob, with an inverted stylised row of green leaves below; body decorated with twelve alternating vertical panels of imprinted honey comb (in slight relief) and vertical rows of blue leaves; body narrows to a slightly kicked-in base with a small abrasive pontil mark in the center.

*Condition:* Pedestal base and handles broken and missing; gilt slightly worn; water marks visible at shoulder; small bubbles.

*Provenance:* Christie's South Kensington, 12 June 2014 (lot 39)

*Related Works:* MET 1975.194.1; SMKGH P.1981-298



- Name:* VASE  
*Region:* Bengal  
*Date:* 1850-1900  
*Dimensions:* Height: 24.5 cm – Width: 12 cm  
*Colour:* Translucent emerald green glass; gold  
*Technique:* Free blown; tooled on the pontil; pedestal added; wheel-cut; gilded  
*Description:* Grenade shape; long cylindrical neck with a slightly flared, tooled outer rim and partially gilded flanged knob; base narrows to a point, with a splayed pedestal added, terminating in a rounded rim; the neck, body and foot are all cut and gilt filled with a row of squares; the body

is cut and gilt decorated with four large floral blossoms, evenly spaced around the body and interspersed with 'paisley' shaped leaves arranged vertically around a central circular hollow, with a row of small, three-petal flowers around the pedestal; small abrasive pontil mark at the center of the base.

*Condition:* Object is intact with minor wear of gilt and paint; numerous air bubbles and minor dark inclusions.

*Location:* Stiftung Museum Kunstpalast Glasmuseum Hentrich, Dusseldorf (Acc. No. P.1981-297)

*Provenance:* Acquired by the museum in 1981

*Published:* Ricke, *Neue Glaser*, 1985, S.53, Abb. 13; Ricke 1989, cat. 200, p. 129

*Related Works:* *Glass:* BM 1961.10-16.1; VAM 15-1930; LNS 73 G; MG MA.6802; LTS 1985.1.349.4; DC 10.2010; LACMA M.76.2.28; JKMM 76.1475





*Object Name:* SMALL BOTTLE

*Region:* Northern India

*Date:* 1750-1850

*Dimensions:* Height: 6.5 cm – Width of base: 3.4 cm – Weight: 16.3 g

*Colour:* Translucent greyish colourless glass; gold

*Technique:* Free blown, tooled on the pontil; gilded

*Description:* Rounded body with a long cylindrical neck that flares to a rounded tooled rim; neck gilt decorated with three horizontal rows of geometric patterning, flanked by solid gilt bands; upper shoulder and body decorated with bands of running vegetal and floral scrolls; body rounds to a kicked-in base with a small unpolished pontil mark in the center.

*Condition:* Intact with strong wear of gilt; strong stains covering the interior.

*Location:* British Museum, London (Acc. No. 1888.0608.11)

*Provenance:* Bequeathed by Felix Slade (executors of) in 1868

*Related Works:* Shape: COR. 75.6.13





*Object Name:* ROSEWATER SPRINKLER or BOTTLE

*Region:* Northern India, probably Patna

*Date:* 1750-1800

*Dimensions:* Height: 12.7 cm (approx.)

*Colour:* Translucent greyish colourless glass; green; pink; red; gold

*Technique:* Free blown; tooled on the pontil; painted; gilded

*Description:* Spherical body rising through one short bulbous knob and a slightly bulbous neck that narrows to a metal attached mouth; neck painted with isolated light green leafs highlighted with dark accents and gilt outlined; bottom of neck painted with vertical pink and red petals with solid gilt dashes below; a row of alternating floral and leaf sprays encircles the upper shoulder; body painted with eight vertical plants of eleven leaves in light and dark green, each outlined in gilt; a fine vine and creeper motif runs around the base and upper shoulder; body narrows to a flattened base with an unpolished pontil mark in the center.

*Condition:* Upper neck and mouth broken, reinforced by a metal band; wear of gilt; slightly milky film; scattered air bubbles.

*Location:* Bharat Kala Bhavan, Varanasi (Acc. No. 9097)

*Published:* Dikshit, Plate XXIII.B (right), p. 99

*Related Works:* Shape: BKB 14, showcase 6



- Name:* VASE
- Region:* Northern India, probably Patna
- Date:* 1775-1825
- Dimensions:* Height: 19.1 cm – Width: 12.3 cm
- Colour:* Translucent greyish colourless glass; green, blue; gold
- Technique:* Free blown; tooled on the pontil; gilded; painted
- Description:* Spherical body, drawn upward to a long cylindrical neck flaring to an open mouth with a splayed, tooled and gilded rim; body narrows to flattened base with small abrasive pontil mark in the center; splayed circular pedestal added posteriorly; neck and body painted with double isolated blue flowers outlined in gold; a fine chequered and solid gilt band encircles the upper neck and shoulder, with a row of inverted stylised leaves below; gilded floral scroll runs around the upper shoulder.
- Condition:* Object is intact with minor wear of gilt; strong milky film covering the glass, indicating advanced crizzling.
- Location:* Stiftung Museum Kunstpalast Glasmuseum Hentrich, Dusseldorf (Acc. No. P.1987-59)
- Provenance:* Acquired by the museum in 1981; Spink & Son, London 1980 (lot 54)
- Related Works:* Shape: COR 75.6.13



*Object Name:* BOTTLE or VASE

*Region:* Kapadwanj, Gujarat or Patna, Bihar

*Date:* 1800-1900

*Dimensions:* Height: 21.9 cm – Diameter: 11.3 cm

*Colour:* Opacified turquoise blue glass; gold

*Technique:* Free blown; tooled on the pontil; gilded

*Description:* Spherical body, drawn upward to a long cylindrical neck flaring out to a rounded mouth and gilded rim; isolated gilt trefoils decorate the body; flattened and hollowed base with an unpolished pontil mark in the center.

*Condition:* Intact with considerable wear of gilt; glass filled with whitish bubbles; seeds; dark inclusions.

*Location:* Corning Museum of Glass, New York (Acc. No. 75.6.13)

*Provenance:* Purchased from Saroopchand Backliwal, New Delhi in 1975

*Related Works:* LACMA M.89.83.1a-b; LACMA M.89.83.2a-b; LACMA M.89.83.4; LACMA M.89.83.6-10; MSMS M.730.73; M.708.73



*Object name:* ROSEWATER SPRINKLER (GULABPASH)

*Region:* Kapadwanj, Gujarat

*Date:* 1800-1900

*Dimensions:* Height: 20.96 cm – Width: 8.89 cm

*Weight:* 103.6 g

*Colour:* Transparent blue glass

*Technique:* Free blown; tooled on the pontil; pedestal added

*Description:* Spherical body rising to a tall cylindrical neck terminating in five bulbous knobs; neck narrows to a small rounded and tooled mouth; body narrows to a slightly kicked-in base with splayed rounded pedestal added; unpolished pontil mark in the center.

*Condition:* Object is intact with patches of fogginess around the body; numerous large air bubbles scattered throughout, with dark inclusions.

*Location:* Los Angeles County Museum of Art (Acc. No. M.89.83.2)

*Credit Line:* Museum Acquisition Fund, 1989

*Related Works:* LACMA M.89.83.1a-b; LACMA M.89.83.2a-b; LACMA M.89.83.4; LACMA M.89.83.6-10; COR 75.6.13; MSMS M.730.73





*Object name:* BOTTLE

*Region:* Kapadwanj, Gujarat

*Date:* 1800-1900

*Dimensions:* Height: 28.5 cm – Widest width: 9.5 cm

*Colour:* Translucent turquoise glass

*Technique:* Free blown; tooled on the pontil; rim added

*Description:* Curved spherical body with a long cylindrical neck drawn out with applied wavy rim; body narrows to a hollowed, kick-in base with a polished pontil mark in the center.

*Condition:* Broken upper neck; dirt and watermarks; numerous air bubbles scattered throughout the glass, with some blisters (burst bubbles); dark inclusions.

*Location:* Maharaja Sawai Man Singh II Museum, Jaipur (Acc. No. M.708.73)

*Provenance:* Donated by H.H. Rajmata Padmini Devi of Jaipur, August 27<sup>th</sup> 1974

*Related Works:* LACMA M.89.83.1a-b; LACMA M.89.83.2a-b; LACMA M.89.83.4;  
LACMA M.89.83.6; LACMA M.89.83.7; LACMA M.89.83.8; LACMA  
M.89.83.9; LACMA M.89.83.10; MSMS M.730.73





- Object name:* BOTTLE  
*Region:* Kapadwanj, Gujarat  
*Date:* 1800-1900  
*Dimensions:* Height: 28 cm – Widest width: 16 cm  
*Colour:* Transparent green glass  
*Technique:* Free blown; tooled on the pontil; rim added  
*Description:* Spherical, flattened body with a short cylindrical neck, broken with a rim added; body narrows to a hollowed, kicked-in base with an unpolished pontil mark in the center.  
*Condition:* Object is intact with patches of fogginess around the body; numerous large air bubbles scattered throughout, with dark inclusions.  
*Location:* Maharaja Sawai Man Singh II Museum, Jaipur (Acc. No. M.730.73)  
*Provenance:* Donated by H.H. Rajmata Padmini Devi of Jaipur, August 28<sup>th</sup>, 1974  
*Related Works:* MSMS M.708.73; LACMA M.89.83.3; COR 75.6.13



*Object Name:* JAR with LID & DISH

*Region:* Northern India, probably Delhi or Awadh

*Date:* 1750-1800

*Dimensions:* Height of container: 8.5 cm – Diameter: 11 cm – Diameter of dish: 11.8 cm – Weight: 303.2 g (jar and lid) - 92.9 g (dish)

*Colour:* Translucent cobalt blue glass; gold

*Technique:* Free blown; tooled on pontil; foot rim added; gilded

*Description:* *Jar & Lid:* Rounded bowl shape with high collar flaring slightly to a rounded rim; circular concave lid with rounded gilded rim and circular knob; lid gilt decorated with six isolated iris sprays with two triangle and tripartite leaf bands, flanked by solid gilt bands and a row of circles; bowl decorated with eight isolated lily sprays around the collar, and a fine triangle and tripartite leaf motif and stylised leaves; body decorated with seven large lily sprays; small downward flaring



foot rim added, with a solid gilt band and fine diagonal dashes; flattened base with a small unpolished pontil mark in the center.

*Dish:* Circular shaped; flat center with slight concavity around the edge; shallow curved wall with rounded gilded rim; herringbone pattern around the rim and central circular cartouche, decorated inside with a ten-petal floral spray and outside with eight iris sprays; exterior surface undecorated; rough pontil mark at center of base; no foot or rim.

*Condition:* Small chip in jar's foot rim; lid broken at base and rim; minimal wear of gilt; air bubbles, seeds and small dark inclusions.

*Location:* British Museum, London (Acc. No. 1878, 1230.324)

*Provenance:* Bequeathed by John Henderson in 1878.

*Related Works:* *Jar & Lid:* JKMM 76.1476; COR 75.6.15; BKB (showcase 6, no. 11); RIJK AK-NM-6982-1

*Dish:* VAM 3561896; MET 2005.45; NMD 57.31/20





*Object Name:* JAR with LID

*Region:* Northern India

*Date:* 1750-1800

*Dimensions:* Height: 10.8 cm – Weight: 253.0 g

*Colour:* Opacified yellow glass; gold

*Technique:* Free blown; tooled on the pontil; gilded

*Description:* Rounded bowl shape with gilded lid; high collar flaring slightly to a rounded tooled rim and circular gilded knob roughly cut flat at the top; bowl and lid entirely gilt decorated with three leaf sprays enclosed within interlocking foliate medallions (or ogees); a herringbone band and a row of gilt circles decorates the upper shoulder; small downward flaring foot rim added posteriorly with a kicked-in base; unpolished pontil mark in the center.

*Condition:* Two broken parts at the foot; several small dark inclusions.  
*Location:* Jagdish & Kamla Mittal Museum of Indian Art, Hyderabad (Acc. No. 76.1476)  
*Provenance:* Purchased from a royal family in Hyderabad in 1960 for 60 rupees  
*Related Works:* *Shape:* BM 1878, 1230.324; COR 75.6.15; RIJK AK-NM-6982-1; BKB (showcase 6, no. 11)  
*Colour:* Christie's South Kensington, June 2014 (lot 41); COR 66.1.9B; BKB 9195; BKB 9193







*Object name:* JAR

*Region:* Northern India

*Date:* 1800-1850

*Dimensions:* Height: 7.8 cm – Weight: 144.9 g

*Colour:* Opacified yellow glass; gold

*Technique:* Free blown; tooled on the pontil; gilded

*Description:* Rounded bowl shape; high collar flaring slightly to a round, gilded rim; neck gilded with isolated stylised leaves; upper shoulder decorated with a herringbone band and inverted stylised leaves below; six isolated iris sprays decorate the body, which rounds to a flattened base with a foot rim added; abrasive pontil mark in the center.

*Condition:* Half of the collar broken and missing; gilt worn slightly; numerous dark inclusions; most likely had an accompanying lid also missing.

*Provenance:* Christie's South Kensington, 12 June 2014 (lot 41)

*Related Works:* *Colour:* JKMM 76.1476; COR 66.1.9B; BKB 9195; BKB 9193





*Object Name:* JAR with LID

*Region:* Northern India, probably Patna

*Date:* 1775-1825

*Dimensions:* Height: 8.2 cm – Body diameter: 10.9 cm

*Colour:* Translucent greyish colourless glass; gold

*Technique:* Free blown; tooled on the pontil, gilded

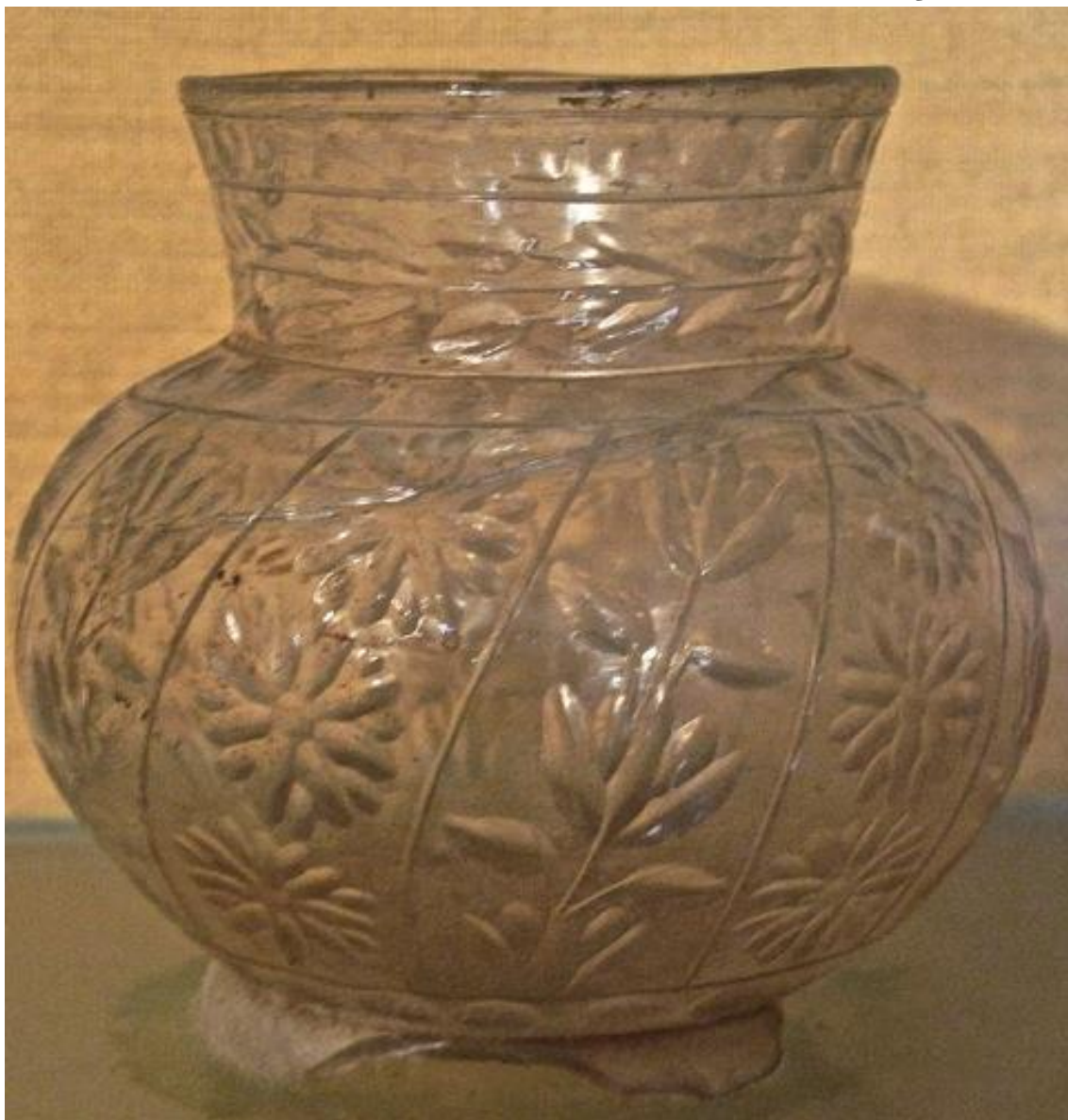
*Description:* Rounded bowl shape with high collar flaring slightly to a rounded rim with a small, downward flaring foot rim and unpolished pontil mark at the base; circular concave lid with rounded gilded rim and circular knob cut and flattened at the top; body of the bowl decorated with a delicate gilded pattern of leaves enclosed within interlocking foliate medallions (ogees); the neck is decorated with a similar singular band of isolated leaves, with a fine herringbone pattern and a row of inverted petals encircling the upper shoulder. Lid gilt decorated with isolated floral sprays and inverted stylised leaves around the knob.

*Condition:* Object is intact with minor wear of gilt; several bubbles scattered throughout the glass. The lid is not original to the bowl.

*Location:* Corning Museum of Glass, New York (Acc. No. 75.6.15)

*Provenance:* Purchased from Saroopchand Backliwal, New Delhi in 1975

*Related Works:* *Shape:* JKMM 76.1476; BM 1878, 1230.324; RIJK AK-NM-6982-1; BKB (showcase 6, no. 11)



*Object Name:* JAR

*Region:* Northern India, probably Patna

*Date:* 1800-1850

*Dimensions:* Height: 9.5 cm

*Colour:* Translucent greyish colourless glass

*Technique:* Free blown; tooled on the pontil; wheel-cut; pedestal added

*Description:* Rounded bowl shape; high collar flaring slightly to an uneven rounded rim; neck cut with a band of circular hollows and a vegetal scroll; upper shoulder and the bottom of the base cut with a similar band of circular hollows; body cut with diagonal columns of alternating floral sprays; splayed foot rim added; slight kicked-in base with an unpolished pontil mark in the center.

*Condition:* Pedestal broken around the edges; visible crack wrapping around the upper shoulder; milky film; minor dark inclusions.

*Location:* Bharat Kala Bhavan, Varanasi Showcase 6, No. 11

*Related Works:* *Shape:* JKMM 76.1476; BM 1878, 1230.324; COR 76.6.15; RIJK AK-NM-6982-1



*Object name:* JAR

*Region:* Awadh or Bengal

*Date:* 1775-1800

*Dimensions:* Height: 8.4 cm – Diameter: 11.5 cm - 115.5 g

*Colour:* Translucent greyish colourless glass; red, light and dark blue, green; gold

*Technique:* Free blown; tooled on the pontil; painted; gilded

*Description:* Rounded bowl shape with a shortened collar flaring slightly to a rounded pinched rim; neck painted with a row of stylised vegetal sprays, flanked by fine running vine and creeper motifs; body decorated with two rows of eight polylobed vegetal arches each comprising a blue five-petal flower with two leaves set against a red background, and gilt outlined with fine vertical dashes; small flaring foot rim added with a flattened base and a small unpolished mark in the center.

*Condition:* Numerous seeds scattered throughout the glass.

*Location:* The David Collection, Copenhagen (Acc. No. 34.1980)

*Credit Line:* David Collection Fund, 1980

*Published:* Kjeld von Folsach, 2001, pp. 222, figure 352; *Spink & Son*, London, 1980, cat. 52.

*Related Works:* Shape: JKMM 76.1476; BM 1878, 1230.324; COR 76.6.15; RIJK AK-NM-6982-1; BKB (showcase 6, No. 11)





*Object Name:* BOWL with LID

*Region:* probably Lucknow

*Dating:* 1750-1775

*Dimensions:* Height (including lid): 9 cm – Diam. opening: 12.6 cm – Weight: 331.1g

*Colour:* Translucent cobalt blue glass; light green; white; gold

*Technique:* Free blown; tooled on the pontil; painted; gilded

*Description:* Circular bowl flaring slightly to a rounded gilded rim; lid circular shaped with a concave base, extending to a flattened edge that terminates with a rounded gilded rim; circular knob added posteriorly, cut on top leaving a roughened surface; a gilded triangular band flanked by fine solid gilt bands decorates the rim of the lid and bowl; four isolated four-leaf medallions painted in the reverse gilt technique, each leaf decorated with a smaller four-leaf flower are evenly spaced around both the lid and the exterior of the bowl; the remainder of the surface delicately painted with light green arabesques and small white floral dots; the base narrows slightly, terminating in a flared foot rim (added posteriorly); kicked-in base with an unpolished pontil mark in the center.

*Condition:* Foot rim damaged and missing parts; gilt slightly worn around the bowl and missing entirely around the knob; numerous fine air bubbles and seeds; inclusions.

*Location:* National Museum, New Delhi (Acc. No. 57.31/12)

*Provenance:* Purchased in 1957 from C.L. Nowlakha, antique dealer in Calcutta



*Published:* Dikshit, pg. 101, Plate XXVI.B

*Related Works:* *Cobalt glass:* - MET 2004.45; MET 1971.84; BMFA 66.843; LACMA 162.66; LACMA, M.2002.1.488a; M.2002.1.488b; CLE 61.44; PWM 58.10; BM 1878,1230.324; BM SLMisc.343; BM SLMisc.341; BM 1887,1216.19; BM 1887,1216.18; BM S.342





*Object Name:* BOWL with LID

*Region:* Delhi or Lucknow

*Date:* 1750-1775

*Dimensions:* Total height: 12.5 cm – Height of bowl: 7 cm– Diam. opening: 12.8 cm  
– Weight: 593.8 g

*Colour:* Translucent greyish colourless glass; cobalt blue, light green; gold

*Technique:* Free blown, tooled on the pontil; appliqué; painted; gilded

*Description:* Circular bowl shape that flares slightly to a rounded gilded rim; circular concave lid with rounded gilded rim and gilded knob, cut with a flattened top; bowl and lid decorated with appliqué cobalt blue and green lily sprays, each gilt outlined; lid decorated with eight isolated lily sprays and smaller blossoms, flanked by a row of gold appliqué stylised leaves; bowl decorated with ten similar iris sprays, stylised leaves, and solid gilt bands; a small eight-petal gilt flower is painted in the center of the bowl; small downward flaring foot rim added, painted with a fine gilt band; slight kicked-in base with small unpolished pontil mark in center.

*Condition:* Object is intact and in good condition with minor wear of gilt; seeds and small bubble at base.

*Location:* British Museum, London (Acc. No. S.342)

*Provenance:* Bequeathed by Felix Slade (executors of) in 1868

*Related Works:* Bowl: BKB (showcase 7, no. 19); NMD 59.326; DC 34.1980







*Object name:* BOWL

*Region:* Delhi or Lucknow

*Date:* 1775-1800

*Dimensions:* Height: 5.5 cm – Diam. opening: 11.7 cm – Width of base: 6.3 cm – Weight: 109.2 g

*Colour:* Translucent greyish colourless glass; red, green; gold

*Technique:* Free blown; tooled on the pontil; painted; gilded

*Description:* Circular shape that flares widely to an uneven, rounded rim; a vine and floral motif painted in light and dark green, flanked by fine red and white chequered rows, runs around the exterior upper rim and the base; body gilt decorated with eight isolated iris sprays; body narrows to a slightly kicked-in base with a small polished pontil mark in the center.

*Condition:* Object is intact with a milky film presented around the inner base; slight wear of gilt; seeds scattered throughout the glass.

*Location:* The David Collection, Copenhagen (Acc. No. 216.2006)

*Provenance:* Acquired in 2006; formerly in the collection of Francesca Galloway, London

*Related Works:* BM S.342





*Object Name:* BOWL with HANDLES

*Region:* Delhi or Lucknow

*Date:* 1725-50

*Dimension:* Height: 7 cm – Diam. opening: 15.8 cm

*Colour:* Translucent greyish colourless glass; gold

*Technique:* Free blown; tooled on the pontil; gilded; handles added

*Description:* Rounded bowl shape flaring slightly to a rounded rim with a small, downward flaring foot rim and an unpolished pontil mark in the center of the base; two curved and gilded handles added on either side of the body; body decorated in delicate floral scrolls emerging from four evenly spaced bulbous vases, flanked by a fine triangle and tripartite leaf motif; foot painted with fine diagonal dashes; small floral spray painted on the inside, around the pontil mark. Unidentified red seal, or stamp, added to the body.

*Condition:* Object is intact and in excellent condition, with some wear of gilt ware; seeds and dark inclusions scattered throughout the glass.

*Location:* Staatliche Museen zu Berlin, Pergamonmuseum, Berlin (Acc. No I.1990.10)

*Related Works:* NMD 59.326; RIJK AK-NM-6981-A; BKB (showcase 7, No.19)





*Object Name:* BOWL

*Region:* Northern India, probably Awadh

*Date:* 1750-1800

*Dimensions:* Height: 7.5 cm (approx.) - Diam. opening: 10.5 cm (approx.)

*Colour:* Translucent greyish colourless glass; gold

*Technique:* Free blown; tooled on the pontil; gilded; pedestal added

*Description:* Rounded bowl shape flaring slightly to a rounded gilded rim; upper bowl gilt decorated with a herringbone band flanked by two fine solid gilt bands; body and base decorated with a running vine of stylised flowers alternating with leaves; splayed pedestal added and gilded with stylised dashes; subtle kicked-in base with a small unpolished pontil mark in the center.

*Condition:* Object is intact with minor wear of gilt; seeds; minor inclusions.

*Location:* Bharat Kala Bhavan, Varanasi Showcase 7, No. 19

*Related Works:* NMD 59.326





*Object Name:* BOWL

*Region:* Northern India, probably Awadh

*Date:* 1750-1800

*Dimensions:* Height: 7.7 cm - Diam. opening: 10.4 cm - Weight: 210.4 g

*Colour:* Transparent greyish colourless glass; gold

*Technique:* Free blown; tooled on the pontil; gilded; pedestal added

*Description:* Rounded bowl shape flaring slightly to a rounded gilded rim; upper portion of bowl gilt decorated with a herringbone band flanked by two fine solid gilt bands; upper body and base decorated with band of stylised leaves punctuated by petals; foot rim added and gilded with a fine solid gilt band; subtle kicked-in base with an unpolished pontil mark in the center.

*Condition:* Foot rim largely broken; wear of gilt; several air bubbles ranging in size; minor inclusions.

*Location:* National Museum, New Delhi (Acc. No 59.326)

*Related Works:* BKB (showcase 7, No. 19)





*Object name:* DISH

*Region:* Northern India

*Date:* 1750-1800

*Dimensions:* Height: 10 cm (approx.) – Maximum width: 18 cm (approx.)

*Colour:* Translucent greyish colourless glass

*Technique:* Free blown; tooled on the pontil; wheel-cut

*Description:* Circular form with curved sides and flared rim with folded edge; rounded kicked-in base with a concave bottom and large abrasive pontil mark in the center; body cut with a band of circular hollows around the rim and bottom of the base, flanked by a band of stylised leaves; body decorated with eight isolated floral sprays enclosed within interlocking foliate medallions, each adjoined by a smaller floral spray.

*Condition:* Object is intact with minor crizzling detected; concentric marks; seeds; several small inclusions around the folded rim.

*Location:* Umaid Bhavan Palace, Jodhpur, Rajasthan

*Related Works:* COR 66.6.2; BKB (Showcase 6, no. 6)



*Object Name:* BOWL

*Region:* probably Bengal

*Dating:* ca. 1800-50

*Dimensions:* Height: 6.4 cm – Top diameter: 18.7 cm

*Colour:* Opalescent turquoise blue glass; red; gold

*Technique:* Free blown; tooled on the pontil; painted; gilded

*Description:* Circular form with curved sides and a flared rim with folded edge; the outside of the bowl is decorated with three rows of isolated red and pink flowers, each outlined in gold, flanked by a fine band of red diagonal leaves painted against a white background, with fine gilt lines; small gilded flower painted on the inside, above the pontil mark; body narrows to a flattened base with a large abrasive pontil mark in the center.

*Condition:* Object is intact with minor wear of gilt

*Location:* Corning Museum of Glass, New York (Acc. No. 66.6.2)

*Provenance:* Acquired from Alice Boney in 1966

*Related Works:* Umaid Bhavan Palace, Jodhpur



- Object Name:* DISH with LID  
*Region:* Northern India  
*Date:* 1800-50  
*Dimensions:* Height: 7 cm (approx.) – Width: 15 cm (approx.)  
*Colour:* Translucent greyish colourless glass  
*Technique:* Free blown; tooled on the pontil; wheel-cut; knob added  
*Description:* Rounded circular shape that flares out to a rounded rim; circular knob added and cut with a flattened top; upper neck and outer rim of lid cut with a row of circular hollows and stylised isolated leaves; bottom portion undecorated.  
*Condition:* Object is intact; milky film and dirt within crevices of cut decoration.  
*Location:* Bharat Kala Bhavan, Varanasi, Showcase 6, No. 6  
*Related Works:* Umaid Bhavan Palace, Jodhpur





*Object name:* LARGE TRAY

*Region:* Delhi or Lucknow

*Date:* 1775-1800

*Dimensions:* Height: 6.3 cm – Diameter: 28.4 cm

*Colour:* Translucent greyish colourless glass; yellow, red, green, blue; gold

*Technique:* Free blown; tooled on the pontil; painted; gilded

*Description:* Circular shaped; flat center with slight concavity around the edge; deep curved wall with rounded gilded rim; interior of the dish painted with five-petal yellow floral sprays, highlighted with red accents and outlined in gold, each framed within vegetal latticework, descending in three smaller rows towards a central medallion decorated with floral sprays and arabesques; a solid gilt band encircles the central medallion, outer rim and external rim, flanked by a fine green and blue chequered band; exterior of the dish painted with similar five-petal yellow floral sprays, mirroring the flowers painted on the interior; slight kicked-in base with a large unpolished pontil mark in the center.

*Condition:* Minor wear of gilt; numerous air bubbles; two blisters at inner rim.

*Inventory:* The David Collection, Copenhagen (Acc. No 37.1999)



*Provenance:* Acquired in 1999

*Published:* Kjeld von Folsach 2001, p. 222, figure 353

*Related Works:* *Decoration:* CMA 1969.286; LACMA M.76.2.20; COR 69.6.5; SJM 148





*Object Name:* SCALLOPED SALVER

*Region:* Delhi or Lucknow

*Date:* 1750-75

*Dimensions:* Width: 13.5 cm – Weight: 172.7 g

*Colour:* Translucent greyish colourless glass; pink, green, blue; gold

*Technique:* Mould blown; appliqué; painted; gilded

*Description:* Circular shaped; flat center with slight concavity around the edge; shallow lobed wall with rounded gilded rim; entire dish decorated in appliqué painted with blue, pink and green and gilt outlined; the outer rim is moulded into eighteen lobes, each painted with an isolated pink and blue iris spray, with a running iris and vine motive encircling the center of the dish, wrapping around a central, gilded medallion enclosing a pink floral spray; exterior of the dish remains undecorated; no foot rim added; small unpolished pontil mark in the center of the back.

*Condition:* Object is intact with slight wear of gilt; several medium sized air bubbles and seeds.

*Location:* Jagdish & Kamla Mittal Museum of Indian Art, Hyderabad (Acc. No. 76.1474)

*Published:* Mittal 2007, cat. 122, p. 241.

*Related Works:* COR 74.6.2, MET 1987.158, MET 1971.84







*Object name:* SCALLOPED SALVER

*Region:* Delhi or Lucknow

*Date:* 1750-75

*Dimensions:* Diameter: 10.2 cm – Height: 1.3 cm – Weight: 63.9 g

*Colour:* Opalescent pale green glass; pink, white, green; gold

*Technique:* Mould blown; tooled on the pontil; painted; gilded

*Description:* Circular shaped with flat center and slight concavity around the edge; shallow lobed walls with flattened rim; each lobe is gilt painted with a stylised leaf (or petal), separated by vertical panels of white and red painted floral scrolls; a similar scroll encircles the central pink blossom, painted with rows of dense overlapping petal and seventeen square shape petal along the exterior, all detailed with red; exterior undecorated; pontil mark in center of back.

*Condition:* Object is intact with minor wear of gilt; minor inclusions.

*Location:* Metropolitan Museum of Art, New York (Acc. No. 1987.158)

*Credit Line:* Purchase, Mrs. Stuart Cary Welch Gift, 1987

*Provenance:* Spink & Sons Ltd., London, until 1987; sold to MMA



*Published:* Carboni & Whitehouse 2001, fig. 106, p. 277; Carboni 2001, p. 394;  
Carboni 2001, *MET Bulletin* 59, p. 32.  
*Related Works:* COR 74.6.2; SMKGH P.1985-97; LNS 283 G





*Object Name:* SCALLOPED SALVER

*Region:* Delhi or Lucknow

*Date:* 1725-75

*Dimensions:* Width: 24.8 cm –Diameter: 18.3 cm

*Colour:* Opalescent pale green; gold

*Technique:* Mould blown; tooled on the pontil; gilded

*Description:* Flat center with slight concavity around the edge; shallow lobed wall with a grounded and gilded rim; interior gilded with an oval cartouche of floral sprays and leaves, encircled by a herringbone band and tripartite lobes, from which vertical panels radiate, connecting to larger lobes with a herringbone band running around the outer edge; twenty-seven moulded lobes surround the edge, each with a gilded, isolated floral spray inside; exterior surface undecorated with a large abrasive pontil mark at the center of the base.

*Condition:* Object is intact with minor wear of gilt.

*Location:* Corning Museum of Glass, New York (Acc. No. 74.6.2)

*Provenance:* Purchased from Saroopchand Backliwal, New Delhi in 1974

*Related Objects:* MET 1987.158; SMKGH P.1985-97





- Name:* SALVER  
*Region:* Awadh or Bengal  
*Date:* 1750-1800  
*Dimensions:* Height: 1.6 cm - Diameter: 15 cm  
*Colour:* Opalescent pale green glass; gold  
*Technique:* Free blown; tooled on the pontil; gilded  
*Description:* Circular shaped with a flat center and slight concavity around the edge; shallow walls with a rounded tooled rim; a gilded triangle-chevron pattern with fine gilt bands encircles the rim and central cartouche, with a floral spray inside, and six isolated vegetal sprays decorating the interior; body curves to a slightly kicked-in base with a small abrasive pontil mark in the center; exterior remains undecorated.  
*Condition:* Object is intact with minor wear of gilt; some seeds with minor dark inclusions.  
*Location:* Stiftung Museum Kunstpalast Glasmuseum Hentrich, Dusseldorf (Acc. No. P.1985-97)  
*Provenance:* Acquired by the museum in 1985.  
*Related Works:* MET 1987.158; COR 75.6.2



*Object name:* SCALLOPED SALVER

*Region:* probably Bengal

*Dating:* 1850-1900

*Dimensions:* Diameter: 23.7 cm – Weight: 635 g

*Colour:* Translucent cobalt blue and light blue glass; gold

*Technique:* Flashed glass; mould blown; tooled on the pontil; wheel-cut; gilded

*Description:* Circular shaped with flat center and slight concavity around the edge; shallow lobed walls with flattened gilded rim; each of the thirty-eight lobes cut with a leaf shaped hollow and gilt outlined; interior cut and gilt outlined with twelve isolated iris sprays enclosed within triangular cartouches radiating from a central floral medallion; fine gilt chequered bands frame each cut motif; the cut patterns (in relief) expose the darker cobalt blue glass, contrasting against the light blue glass beneath; exterior undecorated; unpolished pontil mark.

*Condition:* Damage and restored with visible crack presented; missing piece of rim (approx. 3 cm in width); small chips in glass around rim; gilt worn at places; numerous air bubbles and seeds.

*Location:* Metropolitan Museum of Art, New York (Acc. No. 1971.84)

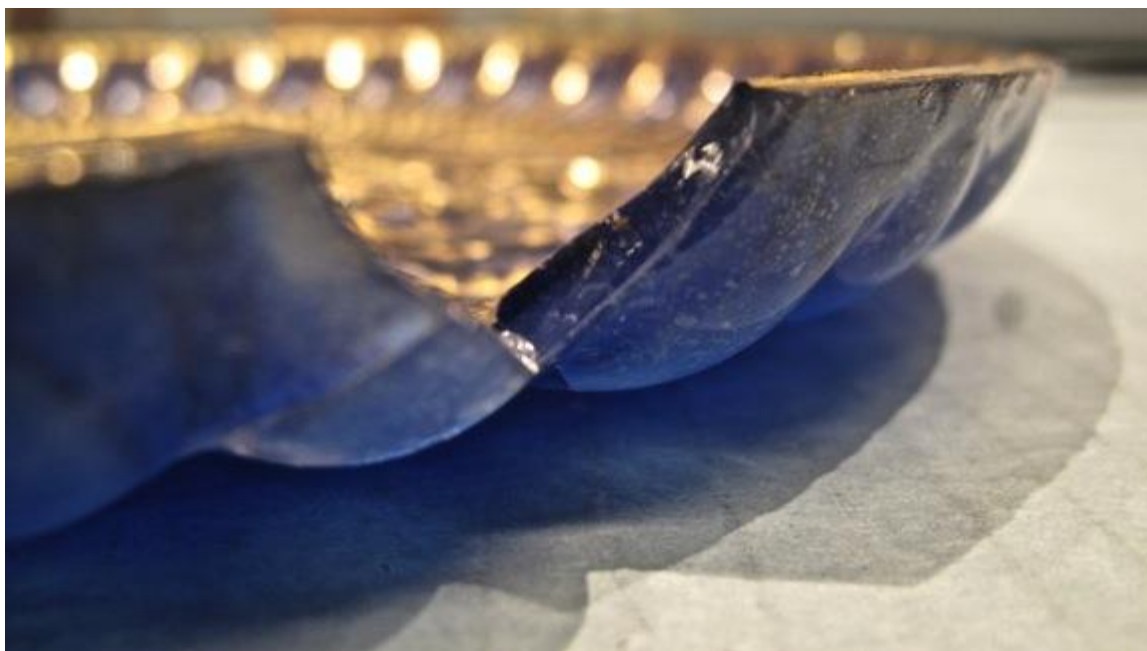
*Credit Line:* Rogers Fund, 1971

*Provenance:* John J. Klejman, New York, until 1971; sold to MMA

*Related Works:* *Shape:* MET 1987.158; COR 74.6.2

*Flashed glass:* LNS 283G









*Object name:* SALVER

*Region:* Awadh or Bengal

*Date:* 1775-1825

*Dimensions:* Diameter: 21.5 cm – Weight: 170 g

*Colour:* Translucent cobalt blue glass; gold

*Technique:* Free blown; tooled on the pontil; reverse-gilt and gilded

*Description:* Circular shaped; flat center with slight concavity around the edge; shallow curved wall with rounded gilded rim and thin triangle and tripartite leaf band around the rim and central cartouche, with four floral sprays, enclosed within foliate medallions; eight isolated iris sprays enclosed within interlocking foliate medallions radiate from the center; small footed rim added, with a small unpolished pontil mark in the center; exterior surface undecorated.

*Condition:* Object is intact with minor wear of gilt; some seeds.

*Provenance:* Christie's South Kensington, 10 Oct 2014 (lot 26)

*Related Works:* MET 2000.490b; MET 1971.84



*Object name:* SALVER

*Region:* Awadh or Bengal

*Date:* 1775-1825

*Dimensions:* Maximum width: 16.4 cm – Weight: 170 g

*Colour:* Translucent blue-green glass; gold

*Technique:* Free blown; tooled on the pontil; gilded

*Description:* Circular shaped; flat center with slight concavity around the edge; shallow curved wall with rounded gilded rim; thin triangle and tripartite leaf pattern around the rim and central cartouche, decorated with an eleven-petal flower encircled by vines; eight floral sprays stemming from a single vegetal tuft decorate the dish; exterior surface undecorated; abrasive pontil mark at the center of the base.

*Condition:* Broken and missing portion of the edge; some wear of gilt; numerous air bubbles and several dark inclusions.

*Provenance:* Christie's South Kensington, 12 June 2014 (lot 42)

*Related Works:* SMKGH P.1985-97





*Object Name:* SALVER

*Region:* Delhi or Lucknow

*Date:* 1750-1800

*Dimensions:* Width: 15.2 cm – Weight: 197 g

*Colour:* Translucent emerald green glass; gold

*Technique:* Free blown; tooled on the pontil; gilded

*Description:* Circular shaped; flat center with slight concavity around the edge; deep curved wall with rounded rim; dish decorated entirely in the reverse gilt technique, with a fine herringbone band flanked by solid gilt bands around the rim and central cartouche, decorated with a large four-petal flower in the middle; large vertical iris sprays depicted in different positions, interspersed with slender leaves and stems, decorate the interior; undecorated exterior; no foot or rim added; smoothened pontil mark in the center.

*Condition:* Small accident at outer rim with partial glass missing; slight wear of gilt; foggy patches; numerous seeds scattered throughout the glass.

*Location:* National Museum, New Delhi (Ass. No. 57.31/20)

*Provenance:* Purchased from C.L. Nowlakha, Calcutta, in 1957

*Related Works:* VAM 3561896; MET 2004.45





*Object Name:* SALVER

*Region:* Delhi or Lucknow

*Date:* 1750-1800

*Dimensions:* Height: 1 cm – Width: 16 cm

*Colour:* Translucent blue glass; gold

*Technique:* Free blown; tooled on the pontil; reverse-gilt technique

*Description:* Circular shaped; flat center with slight concavity around edge; shallow curved wall with rounded gilded rim; outer rim and center decorated with a herringbone band flanked by fine solid gilt bands; stylised leaf pattern around the inner rim and center; body decorated in the reverse gilt technique, comprising three rows of iris sprays descending in size towards an eight-petal flower in the center; exterior surface undecorated; unpolished pontil mark.

*Condition:* Broken in half but restored and intact; restoration marks clearly visible; gilt worn at places; small air bubbles.

*Location:* Victoria & Albert Museum, London (Acc. No. 3561896)

*Provenance:* Acquired in 1896

*Published:* Dikshit 1969, plate XXVII.A, p. 100

*Related Works:* MET 2005.45; NMD 57.31/20



*Object name:* SALVER

*Region:* Delhi or Lucknow

*Date:* 1750-1800

*Dimensions:* Diameter: 16.7 cm

*Colour:* Translucent cobalt blue glass; silver; gold

*Technique:* Free blown; tooled on the pontil; foot rim added; painted; gilded

*Description:* Circular shaped; flat center with slight concavity around the edge; shallow curved wall with rounded gilded rim; interior rim and center decorated with a triangle and tripartite leaf band flanked by fine solid gilt bands; interior silver painted with four rows of floral sprays enclosed within a gold latticework pattern, descending in size towards an undecorated center; rounded foot rim added around the base; unpolished pontil mark in the center.

*Condition:* Object is intact with minor wear of gilt; silver tarnished; strong abrasive breakage mark in central medallion; air bubbles; seeds.

*Location:* Metropolitan Museum of Art, New York (Acc. No. 2004.45)

*Credit Line:* Cynthia Hazen Polsky and Leon B. Polsky Fund, 2004

*Provenance:* Simon Ray Gallery, London

*Related Works:* NMD 57.31/20; VAM 3561896





*Object Name:* SAUCER

*Region:* Lucknow (or possibly Bengal)

*Date:* 1725-50

*Dimensions:* Diameter: 17 cm (approx.)

*Colour:* Translucent cobalt blue glass; gold

*Technique:* Free blown; tooled on the pontil; gilded

*Description:* Circular shaped; flat center with slight concavity around the edge; shallow curved wall with rounded gilded rim; a gilded triangular-chevron band encircles the rim and central circular cartouche, with bands of quinque-partite lobes encasing isolated floral sprays, with fine vertical lines radiating from the edges, around the cartouche and edge; the exterior surface remains undecorated, with a small abrasive pontil mark at the center of the base.

*Condition:* Object is intact with some minor wear of gilt; seeds scattered throughout the glass, with several dark inclusions.

*Location:* Victoria & Albert Museum, London (Acc. No. C.142-1936)

*Provenance:* Given by Mrs. Buckley in memory of her husband, Wilfred, in 1936

*Published:* Stronge 1982, cat. 399, p. 127

*Related Works:* VAM C.140-1936; LACMA M.88.124-c



*Object Name:* SAUCER

*Region:* Northern India

*Date:* 1775-1825

*Dimensions:* Width: 9.9 cm – Weight: 70.3 g

*Colour:* Transparent greyish colourless glass; gold; silver

*Technique:* Free blown; tooled on the pontil; painted; gilded

*Description:* Circular shaped; flat center with slight concavity around the edge; shallow curved wall with rounded gilded rim; fine gilded herringbone band around the inner rim and central medallion, enclosing a silver flower flanked by two solid gilt bands; interior decorated with three rows of isolated silver iris sprays; undecorated exterior; no foot or rim; a small abrasive pontil mark in the center.

*Condition:* Object is intact; air bubbles; silver tarnished; slight wear of gilt.

*Location:* National Museum, New Delhi (Acc. No. 57.31/27)

*Provenance:* Purchased from C.L. Nowlakha in Calcutta in 1957

*Related Works:* MET 2000.490a,b; NMD 59.314/2





*Object Name:* SAUCER

*Region:* Northern India

*Dating:* 1775-1825

*Dimensions:* Diameter: 12 cm – Weight: 134.7 g

*Colour:* Transparent greyish colourless glass; gold

*Technique:* Free blown; tooled on the pontil; gilded

*Description:* Circular shaped; flat center with slight concavity around the edge; shallow curved wall with rounded gilded rim; fine herringbone gilt band around the inner rim and the central medallion, enclosing a gold flower; interior decorated with three rows of isolated iris sprays; undecorated exterior; no foot or rim; small abrasive pontil mark in the center.

*Condition:* Object is intact; slight wear of gilt; medium size air bubbles.

*Location:* National Museum, New Delhi (Acc. No. 59.314/2)

*Literature:* Dikshit, pg. 100, plate XXVI.A (No. NMD 15:67)

*Related Works:* NMD 57.31/27



*Object Name:* SAUCER

*Region:* Northern India

*Date:* 1775-1825

*Dimensions:* Diameter: 12.8 cm – Weight: 113.9 g

*Colour:* Transparent greyish colourless glass; gold

*Technique:* Free blown; tooled on the pontil; gilded

*Description:* Circular uneven shape; flat center with deep concavity around the edge; shallow curved wall with rounded gilded rim and central medallion, encasing a gilded flower; interior gilt decorated with two rows of stylised leaves; undecorated exterior; strong concave base with no foot or rim; unpolished pontil mark at the base.

*Condition:* Object is intact; two medium sized air bubbles; slight wear of gilt.

*Location:* National Museum, New Delhi (Acc. No. 59.314/3)

*Related Works:* Dikshit, pg. 100, Plate XXV.B (No. NMB 16:67)



*Object Name:* SAUCER

*Region:* Northern India

*Date:* 1775-1825

*Dimensions:* Largest width: 10 cm – Weight: 72.1 g

*Colour:* Transparent greyish colourless glass; gold

*Technique:* Free blown; tooled on the pontil; wheel-cut; gilded

*Description:* Uneven circular shape; kicked-in center with slight concavity around the edge; shallow curved wall with rounded gilded rim; exterior rim cut with a band of square hollows, inner rim gilt decorated with square patterning; interior cut with two rows of isolated leaf sprays encircling a central floral spray; undecorated exterior; no foot or rim; roughened pontil mark in center of the base.

*Condition:* Object is intact with minor wear of gilt; small air bubbles; some crizzling presented by numerous small dots.

*Location:* National Museum, New Delhi (Acc. No. 57.31/23)

*Provenance:* Purchased from C.L. Nowlakha, antique dealer in Calcutta, in 1957

*Related Works:* BM 1878, 0301.36 a & b; LACMA, M.90.197.2





*Object name:* SAUCER

*Region:* Northern India

*Date:* 1775-1825

*Dimensions:* Height: 20.3 cm – Maximum diameter: 18.4 cm – Weight: 112.4 g

*Colour:* Translucent greyish colourless glass; gold

*Technique:* Free blown; tooled on the pontil; wheel-cut; gilded

*Description:* Uneven circular shape; kicked-in center with slight concavity around the edge; shallow curved wall with rounded gilded rim; interior rim cut and gilt filled with a band of circular hollows and a row of stylised inverted leaves; center cut with a six-petal floral spray surrounded by a band of similar cut and gilded circular hollows and stylised leaves; undecorated exterior; no foot or rim; small abrasive pontil mark.

*Condition:* Object is intact with minor wear of gilt around the inner rim; small air bubbles; minor inclusions.

*Location:* Los Angeles County Museum of Art (Acc. No. M.90.197.2)

*Credit Line:* Gift of Marilyn Walter Grounds

*Provenance:* Collection of Marilyn Walter Grounds until 1990

*Related Works:* BM 1878, 0301.36 a & b; NMD 57.31/23



*Object Name:* CUP & SAUCER

*Region:* Northern India

*Date:* 1775-1825

*Dimensions:* Cup: Height: 5.5 cm – Diameter of opening: 7.8 cm

Saucer: Height: 2 cm – Diameter: 15 cm

Weight: Cup: 76.8 g – Saucer: 176.0 g

*Colour:* Translucent greyish colourless glass; gold

*Technique:* Free blown; tooled on the pontil; foot rim added; gilded

*Description:* *Cup:* Circular shape that flares slightly to a rounded gilded rim; fine herringbone band flanked by two solid gilt bands decorates the upper exterior rim; body gilded with a running floral and vine motif; small gilt flower painted on the inside base; body narrows to a kicked-in base; rounded foot rim added.

*Saucer:* Circular shaped; raised center with concavity around the edge; shallow curved wall with rounded gilded rim; herringbone pattern around the rim and central circular cartouche, decorated with a large eight-petal floral spray and arabesque motif; eight floral sprays and a running vegetal motif circle the interior; exterior surface undecorated; small unpolished pontil mark at the center of the base; rounded foot rim added.

*Condition:* Objects are intact and in good condition with some minor wear of gilt; small bubbles at the foot and base; minor dark inclusions.

*Location:* British Museum, London (Acc. No. 1878, 1230.323)

*Provenance:* Bequeathed to the BM by John Henderson in 1878

*Related Works:* NMD 59.314/2; NMD 59.314/3; NMD 57.31/23; 2; BM1878, 0301.36 a & b; Christie's South Kensington 22 Apr 2016 (lot 536)



*Object Name:* CUP & SAUCER

*Region:* Northern India

*Date:* 1775-1825

*Dimensions:* Cup: Height: 5.4 cm – Diameter of opening: 7.3 cm

Saucer: Height: 2.2 cm – Diameter: 15 cm

Weight: Cup: 74.2 g – Saucer: 216.1 g

*Colour:* Translucent greyish colourless glass; gold

*Technique:* Free blown; tooled on the pontil; foot rim added; gilded

*Description:* *Cup:* Circular shape that flares slightly to a rounded uneven gilded rim; fine herringbone band flanked by two solid gilt bands decorates the upper exterior rim; body gilt painted with iris sprays and a running vegetal motif; small gilt flower painted on the inside base; body narrows to a kicked-in base; small splayed pedestal with a fine gilt rim added.

*Saucer:* Circular shaped; flat center with deep concavity around the edge; shallow curved wall with rounded gilded rim; herringbone pattern around the rim and central circular cartouche, decorated with a large eight-petal floral spray and arabesque motif; eight floral sprays and a running vegetal motif circle the interior; exterior surface undecorated; small unpolished pontil mark at the center of the base; rounded foot rim added.

*Condition:* Objects are intact and in good condition with considerable gilt wear on saucer; seeds; large dark inclusion at the base of the cup.

*Location:* British Museum, London 1878, 0301.36 a & b

*Provenance:* Bequeathed by John Henderson, acquired by BM 1878

*Related Works:* NMD 59.314/; NMD 59.314/3; NMD 57.31/23; 2; BM 1878, 1230.323; Christie's South Kensington 22 Apr 2016 (lot 536)





*Object Name:* CUP & SAUCER

*Region:* Northern India

*Date:* 1775-1825

*Dimensions:* Cup: Diameter of opening: 7.5 cm

Saucer: Diameter: 12.2 cm

*Colour:* Translucent greyish colourless; gold

*Technique:* Free blown; tooled on the pontil; foot rim added; gilded

*Description:* Cup: Circular shape that flares slightly to a rounded, gilded rim; fine herringbone band flanked by two solid gilt bands decorates the upper exterior rim; body gilt painted with floral sprays and a running vegetal motif; small gilt flower painted on the inside base; body narrows to a kicked-in base; rounded foot rim added posteriorly.

Saucer: Circular shaped; raised center with concavity around the edge; curved wall with thick, rounded and gilded rim; eight-leaf spray decorates the center, encircled by a herringbone band flanked by fine solid gilt bands; outer rim gilded with three floral clusters of diverse sprays and leaves; exterior surface undecorated; small unpolished pontil mark at the center of the base; rounded foot rim added.

*Condition:* Both objects are intact and in good condition with some minor wear of gilt; small bubbles at the foot and base; minor dark inclusions.

*Provenance:* Christie's South Kensington, 22 April 2016 (lot 536)

*Related Works:* BM 1878, 1230.323; BM 1878, 0301.36 a & b



*Object Name:* CUP

*Region:* Lucknow (or possibly Bengal)

*Date:* 1725-50

*Dimensions:* Height: 4.3 cm – Diam. (mouth): 7.3 cm – Diam. (foot ring): 4 cm

*Colour:* Translucent cobalt blue glass; gold

*Technique:* Free blown; tooled on the pontil; gilded

*Description:* Round, circular shape flaring upwards slightly to a tooled, rounded rim; pedestal foot rim tooled from the same piece of glass, with a kicked-in base and small abrasive pontil mark; body decorated with four evenly spaced, bulbous shaped vases from which diverse floral sprays emerge; fine triangle and tripartite leaf band encircles the upper exterior rim, flanked by fine solid bands; worn gilded flower painted on the interior.

*Condition:* Object is intact with some minor wear of gilt; seeds scattered throughout the glass; several dark inclusions.

*Location:* Victoria & Albert Museum, London (Acc. No. C.141-1936)

*Provenance:* Given by Mrs. Buckley in memory of her husband, Wilfred, in 1936

*Published:* Stronge 1982, cat. 398, p. 126

*Related Works:* VAM C.140-1936; LACMA M.88.124-c



- Object name:* EWER and CUP (inscribed with the Crest of John Deane)
- Region:* Lucknow (or possibly Bengal)
- Date:* 1725-50
- Dimensions:* Height: 15.24 cm – Length: 18.73 cm – Width: 12.06 cm
- Colour:* Translucent cobalt blue glass; gold
- Technique:* Free blown; tooled on the pontil; handle, footed pedestal and rim added; gilded
- Description:* *Teapot:* Rounded bowl shape with high collar flaring slightly to a rounded rim with a small, downward flaring foot rim and unpolished pontil mark at the base; circular concave lid with rounded gilded rim and circular knob cut and flattened at the top; handle and curved brass spout (replaced sometime during the nineteenth century); entire body gilt decorated with diverse floral sprays emerging from two bulbous shaped vases with scroll handles on each side; a fine gilt triangle and tripartite leaf pattern encircles the upper shoulder and base, with a band of solid circles and squares below the shoulder; neck decorated with a running vine and creeper motif; lid painted with diverse floral sprays similar to the body; small diagonal dashes decorate the flared foot rim; spout and knob painted in solid gilt. Upon one of the bulbous vases is an inscribed horse's head in profile, placed upon a crown. Identified as the Crest of John Deane, Colonial administrator to the English East India Company and President of Bengal from Jan 1723-Jan 1726 and Sept 1728-Feb 1732.
- Cup:* Round, circular shape flaring upwards slightly to a tooled, rounded rim; small abrasive pontil mark at the base; body decorated with four evenly spaced, bulbous shaped vases from which floral sprays emerge; fine triangle and tripartite leaf pattern encircles the upper exterior rim, flanked by fine solid gilt bands.



*Condition:* Object is intact with minor wear of gilt; handle replaced; lid damaged and restored.

*Location:* Los Angeles County Museum of Art (Acc. No. M.84.124.2a-c)

*Credit Line:* Gift of Doris and Ed Wiener

*Provenance:* Purchased by Wiener from C.L. Nowlakha in Calcutta

*Published:* Markel 1991, fig. 8, pp. 82-92

*Related Works:* VAM C.140-1936; VAM C.141-1936; VAM C.143-1936; BM SLMISC.343





*Object Name:* EWER

*Region:* Delhi or Lucknow

*Date:* 1725-50

*Dimensions:* Height: 29 cm – Widest width: 23 cm – Width of base: 9.5 cm

*Weight:* 1370.2 g

*Colour:* Transparent cobalt blue glass; gold

*Technique:* Free blown; tooled on the pontil; pedestal, spout, handle, lid added; gilded; brass fittings

*Description:* Rounded circular base with a long cylindrical neck terminating in a gilded flanged knob and a rounded tooled rim; circular shaped lid with a concave base, rounded gilded rim and circular knob, gilded with vertical petals, solid gilt bands, and a fine triangle and tripartite leaf motif; handle gilded with a running vegetal scroll and fine herringbone bands along the sides; cylindrical shaped spout

terminates in a gilded knob and bulbous shaped mouth, painted with vertical petals and a thin triangle and tripartite leaf motif; neck, spout and body entirely decorated with three poppy sprays enclosed within interlocking foliate medallions (or leaf diapers); a running vine and creeper motif flanked by triangle and tripartite leaf bands encircles the upper shoulder and cylindrical pedestal; unpolished pontil mark in the center of the base; brass fittings (attaching the lid to the upper handle) added.

*Condition:* Object is intact despite previous damage to the lid, leaving visible cracks; gilt slightly worn (around the rims); seeds and minor inclusions.

*Location:* British Museum, London (Acc. No. SLMisc.343)

*Provenance:* Bequeathed to the BM by Sir Hans Sloane in 1753

*Published:* Nesbitt 1871, p. 64, pl. XI; Pinder-Wilson & Tait 1968, no. 162, p. 123; Tait 2012, no. 175, p. 139; Stronge 1982, no. 393

*Related Works:* *Decoration:* VAM C.140-1936; VAM C.141-1936; LACMA M.88.124.2a







*Object Name:* EWER

*Region:* Lucknow

*Date:* 1775-1800

*Dimensions:* Height: 13.2 cm – Weight: 601.9 g

*Colour:* Translucent amethyst glass; gold

*Technique:* Free blown; tooled on the pontil; gilded

*Description:* Rounded uneven shape, narrowing at the neck and base; upper rim cut and smoothened; spout, handle and lid once added, but now broken and missing; upper shoulder and around the bottom of the pot gilded with a thin triangle and tripartite leaf pattern flanked by two solid gilt bands, with a row of circles below; body painted with diverse floral sprays and leaves emerging from twisting branches, stemming from rocks that encircle the base; body narrows to a flattened base that is slightly kicked-in, with an unpolished pontil mark in the center.

*Condition:* Spout and handle broken from the upper body; lid missing; visible cracks throughout with former restoration; superficial surface scratches around base; gilt slightly worn; crizzling seen throughout; numerous air bubbles ranging in size.

*Location:* National Museum, New Delhi (Acc. No. 57.31/22)

*Provenance:* Purchased from C.L. Nowlakha (antique dealer in Calcutta) in 1957

*Related Works:* Glass: COR 69.6.5 - Decoration: LACMA M.76.2.28





- Object name:* VASE or WATER CARRIER (*LOTA*)  
*Region:* Northern India, probably Patna  
*Date:* 1800-50  
*Dimensions:* Height: 22 cm – Maximum width: 22 cm  
*Colour:* Translucent greyish colourless glass; gold  
*Technique:* Free blown; tooled on the pontil; gilded  
*Description:* Globular shape with short cylindrical neck that splays out to a gilded rounded rim; body and neck gilt decorated with five rows of isolated jagged three leaf sprays, each stemming from a fine stem, interspersed with five rows of smaller three pronged leaves; body narrows to a deep kicked-in base with a small unpolished pontil mark in the center.  
*Condition:* Object is intact with strong milky film; visible concentric water mark circumventing the middle of the base; slight wear of gilt; numerous air bubbles throughout; seeds.  
*Location:* Musée Guimet, Paris (Acc. No. MA.6801)  
*Provenance:* Jean and Krishna Riboud Collection, donated in 2000.  
*Published:* Okada 2000, p. 75; *Spinks* London 1995, pp. 28-9, cat. 16.





*Object Name:* PANDAN COVER

*Region:* Northern India, probably Patna

*Date:* 1800-50

*Dimensions:* Height: 10.9 cm – Diameter: 20.6 cm

*Colour:* Translucent greyish colourless glass, gold

*Technique:* Free blown; tooled on the pontil; knob added; gilded

*Description:* Hemispherical shape with a rounded pinched rim and circular knob roughly cut off and flat on top; gilded with inverted leaves enclosed within interlocking medallions (ogees); fine gilded herringbone pattern encircles the bottom of the rim and around the knob.

*Condition:* Object is intact with minor wear of gilt; several bubbles bubble; one large inclusion.

*Inventory:* Corning Museum of Glass, New York (Acc. No. 75.6.17)

*Provenance:* Purchased from Saroopchand Backliwal, New Delhi in 1975

*Related Works:* CSMVS 56.52



*Object name:* PANDAN COVER

*Region:* Northern India, probably Patna

*Date:* 1800-50

*Dimensions:* Height: 9 cm – Diameter: 20.5 cm

*Colour:* Transparent greyish colourless glass; gold

*Technique:* Free blown; tooled on the pontil; knob added; gilded

*Description:* Hemispherical shape with rounded pinched rim and circular knob roughly cut off and flat on top; exterior gilt decorated with thirty-two verticals bands of isolated leaves enclosed within ogees; fine gilded herringbone band around the knob and bottom rim.

*Condition:* The object is intact with strong wear of gilt around the top; numerous minute air bubbles and blisters around the shoulder.

*Location:* Chhatrapati Shivaji Maharaj Vastu Sangrahalaya, Mumbai (Acc. No. 56.52)

*Published:* Dikshit, p. 102, Plate XXVIII.B

*Related Works:* COR 75.6.17





*Object Name:* BASIN

*Region:* Delhi or Lucknow

*Date:* 1750-75

*Dimensions:* Width of opening: 28 cm – Height: 14 cm – Weight: 704.6 g

*Colour:* Opacified white glass; red and green; gold

*Technique:* Free blown; tooled on the pontil; painted; gilded

*Description:* Free blown from a single glass piece; the smaller rounded shape provides the base, while the open upper part consists of a shallow circular shape, flaring to a rounded gilded rim; both the interior upper portion and exterior lower portion are decorated in the reverse gilt-technique, comprising four rows of isolated iris sprays each detailed with green, red and black paint, flanked by a fine row of half iris sprays enclosed within lobed arches; fine triangle and tripartite leaf bands circle the outer and interior rims, and the upper and lower body; three solid gilt bands, a herringbone band, and a row of stylised leaf dashes decorates the exterior rim of the upper portion; body narrows to a flattened base with a large unpolished pontil mark in the center.

*Condition:* Rim badly damaged and restored, visible breakage lines with small missing parts; dirt patches (predominantly around the restoration); air bubbles ranging in size; small dark inclusions.

*Location:* Victoria & Albert Museum, London (Acc. No. IS 33.1892)

*Provenance:* Bought for 20 Pounds from Colonel R. G. Birch in August 1892 [NF Birch, Col. R. G. MA/1437] as '1 Oriental Glass Bowl (repaired)'. A note written by C. Purdon Clarke, dated 12 September 1892 states: 'The piece of glass formed part of a collection which I saw in India and then was valued at over 100 Pounds. It is exceedingly rare and belongs to the same manufacture as the glass recently offered by Col. Cole but is



finer. I recommend the purchase at the price asked having persuaded Col. Birch to reduce it from 50 Pounds the price he asked'. Approved by Philip Cunliffe Own, 12 September 1892.

*Published:* Dikshit 1969, plate XXXA, p. 102-3; Dillon 2000, plate XLVIII.

*Related Works: Glass:* MET 2000.490a,b; SJM 148; BKB 9105





*Object name:* FOOTED BOWL & PLATE

*Region:* Delhi or Lucknow

*Date:* 1750-75

*Dimensions:* Bowl: Height: 12.1 cm – Width: 20.3 cm; Plate: Diam.: 25.4 cm  
Weight: Bowl: 610 g – Plate: 564.5 g

*Colour:* Opacified white glass; gold; silver

*Technique:* Free blown; tooled on the pontil; pedestal foot added; gilded; painted

*Description:* Bowl: Two circular shaped elements flaring to rounded gilded rims, joined at their tops, the smaller bottom element presenting a double bulbous stem with a flattened base; both elements decorated around the exterior rims and base with gilded triangle and tripartite leaf bands, flanked by fine solid gilt bands; upper element decorated with eight silver (and gold outlined) floral sprays stemming from a single vegetal tuft, enclosed within interlocking foliate medallions; interior of the rim gilded with a row of diagonal leaves; bottom element decorated with eight smaller floral sprays in vegetal medallions; unpolished pontil mark underneath the lower element's base, with a kicked-in base seen from the interior of the upper element.

Plate: Circular shaped; flat center with slight concavity around the edge; shallow curved wall with rounded gilded rim; outer rim and central medallion gilded with a triangle and tripartite leaf motif, flanked by fine solid gilt bands; the interior entirely decorated with ten silver floral sprays (gilt outlined) stemming from a single vegetal tuft, enclosed within interlocking foliate medallions; central medallion decorated with silver flowers; exterior undecorated; large unpolished pontil mark at the back.

*Condition:* Objects are intact with slight crack at the base of bowl's upper portion (where stem attaches); minor wear of gilt; silver tarnished.

*Location:* Metropolitan Museum of Art, New York (Acc. No. 2000.490a, b)

*Credit Line:* Purchase, Cynthia Hazen Polsky and Leon B. Polsky Fund and The Annenberg Foundation Gift, 2000

*Provenance:* Abanindranath Tagore, Calcutta, India; [Terence McNerney, New York, until 2000; sold to MMA]

*Published:* *Journal of Glass Studies* 44 (2002). p. 220, ill. (b/w); Topsfield, Andrew, ed. "Arts of India." In *In the Realm of Gods and Kings*. London; New York: Philip Wilson Publishers, 2004. no. 97, pp. 236-37, ill. p. 237 (color).

*Related Works:* *Glass:* SJM 148; BKB 9105; VAM IS.33.1892  
*Decoration:* BKB (Showcase 6, No. 4); Christie's South Kensington 10 Oct 2016 (lot 26)







*Object Name:* CANDLE STICK

*Region:* Awadh or Bengal

*Date:* 1800-1900

*Dimensions:* Height 8.9 cm – Width of base: 7.6 cm

*Colour:* Opacified white glass; yellow, red; silver, gold

*Technique:* Free blown; tooled on the pontil; painted; gilded

*Description:* Rounded circular body that flares to a wider pedestal base with rounded rim; tall cylindrical neck tooled with two flanged knobs at the base; neck rises to a slightly flared thick rounded mouth, presenting uneven tooling marks; neck, body and pedestal decorated with isolated silver lotuses, comprising four around the neck, six around the body, and a row of inverted lotus flowers alternated with single gold leaves around the base; fine bands of yellow and red geometric patterning encircles the upper portions of the neck, shoulder and base; hollowed base.

*Condition:* Object is intact; all silver has tarnished; minor dark inclusions.

*Location:* Bharat Kala Bhavan, Varanasi (Acc. No. 9105)

*Published:* Dikshit, Plate XXI.C (left), p. 97

*Related Works:* Glass: SJM 148; VAM IS.33.1892; MET 2000.490a, b

*Shape:* BKB 9108; BKB 9106; BKB 9103; BKB 9107; BKB 9104; RIJK AK-NM-6622



*Object Name:* CANDLE STICK

*Region:* Awadh or Bengal

*Date:* 1800-1900

*Dimensions:* Height: 9.5 cm

*Colour:* Opacified turquoise blue glass; gold

*Technique:* Free blown; tooled on the pontil; gilded

*Description:* Rounded circular body that flares to a wider pedestal base with rounded rim; tall cylindrical neck tooled with two flanged knobs at the base; neck rises and flares slightly to a thick rounded mouth; neck gilded with alternating floral and leaf sprays, flanked by a fine herringbone band; body decorated with eight isolated inverted floral sprays, each stemming from a single vegetal tuft; pedestal painted with a row of alternating leaves and petals, flanked by fine solid gilt bands; hollowed base.

*Condition:* Object is intact with minor wear of gilt around neck.

*Location:* Bharat Kala Bhavan, Varanasi (Acc. No. 9103)

*Published:* Dikshit, Plate XXI.B (left), p. 97

*Related Works:* BKB 9108; BKB 9106; BKB 9107; BKB 9105; BKB 9104; RIJK AK-NM-6622





*Object Name:* CANDLE STICK

*Region:* Awadh or Bengal

*Date:* 1800-1900

*Dimensions:* Height: 9.5 cm – Width of base: 8.3 cm

*Colour:* Opacified light green glass; white, red, green, yellow, orange; gold

*Technique:* Free blown; tooled on the pontil; painted; gilded

*Description:* Rounded circular body that flares to a wider pedestal base with rounded rim; tall cylindrical neck tooled with two flanged knobs at the base; neck rises to a slightly flared thick rounded mouth, presenting uneven tooling marks; neck and pedestal decorated with alternating orange and yellow flowers and green leaves; body painted with two rows of isolated white and red flowers enclosed within interlocking foliate medallions; solid gold bands around the upper neck, lower neck and outer pedestal rim; hollowed base.

*Condition:* Object is intact with minor wear of gilt and paint.

*Location:* Bharat Kala Bhavan, Varanasi (Acc. No. 9104)

*Published:* Dikshit, Plate XXI.C, p. 97

*Related Works:* BKB 9108; BKB 9106; BKB 9103; BKB 9107; BKB 9105; RIJK AK-NM-6622





*Object Name:* CANDLE STICK

*Region:* Awadh or Bengal

*Date:* 1800-1900

*Dimensions:* Height: 8.9 cm– Width of base: 7.6 cm

*Colour:* Opacified turquoise blue; pink, red, light and dark green; gold

*Technique:* Free blown; tooled on the pontil; painted; gilded

*Description:* Rounded circular body that flares to a wider pedestal base with rounded rim; tall cylindrical neck tooled with two flanged knobs at the base; neck rises to a slightly flared thick rounded mouth, presenting uneven tooling marks; neck and body decorated with isolated pink and red petals outlined in gilt; eight encircle the body, and four around the upper neck, with diagonal petals around the pedestal; fine light green bands accented with diagonal green dashes decorates the upper neck, shoulder, and pedestal; hollowed base.

*Condition:* Object is intact with minor wear of gilt and enameling.

*Location:* Bharat Kala Bhavan, Varanasi (Acc. No. 9107)

*Published:* Dikshit, Plate XXI.B, p. 97

*Related Works:* BKB 9108; BKB 9106; BKB 9103; BKB 9105; BKB 9104; RIJK AK-NM-6622





*Object Name:* CARPET WEIGHT

*Region:* Northern India

*Date:* 1800-1900

*Dimensions:* Height: 8 cm (approx.)

*Colour:* Translucent greyish colourless glass; gold

*Technique:* Mould blown; wheel-cut; gilded

*Description:* Bud-shaped on a raised square base; top cut and gilded with acanthus leaves, terminating in a floral spray, with a stylised leaf pattern and fine herringbone band; base cut and gilded with a similar acanthus motif, with an inverted stylised leaf band around the bottom of the base.

*Condition:* Object is intact with a small chip at corner; gilt largely worn.

*Location:* Bharat Kala Bhavan, Varanasi (Acc. No. 9965)

*Published:* Dikshit, Plate XXIX.C

*Related Works:* Sotheby's London, Oct 1993 (lot 689); BKB (showcase 6, no. 8)





*Object Name:* CARPET WEIGHT

*Region:* Northern India

*Date:* 1800-1900

*Dimensions:* Height: 12 cm (approx.)

*Colour:* Translucent greyish colourless glass

*Technique:* Mould blown; wheel-cut

*Description:* Bud-shaped on a raised square base; top cut with alternating vertical columns of circular hollows and stylised plants; around the bottom, a row of stylised single petals within triangular arches and a fine herringbone band; bottom square base cut with a wide herringbone band and large circular hollows along the edges; polished pontil mark at base decorated into a floral spray.

*Condition:* Object is intact.

*Location:* Bharat Kala Bhavan, Varanasi, Showcase 6, No. 8

*Related Works:* Sotheby's London, Oct 1993 (lot 689); BKB 9965